

Poliovirus Receptor Rabbit mAb

Catalog No: #60005

Package Size: #60005-1 50ul #60005-2 100ul

Orders: order@signalwayantibody.com

Support: tech@signalwayantibody.com

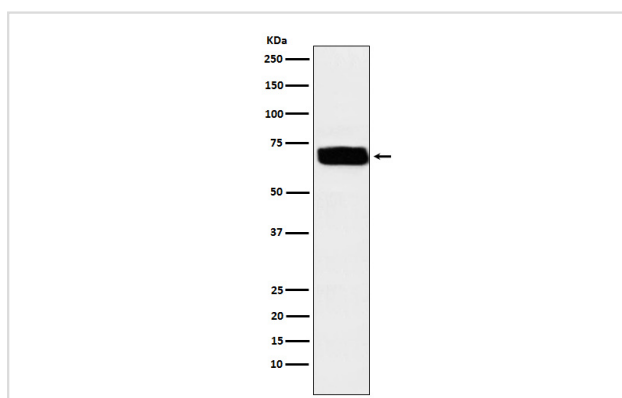
Description

Product Name	Poliovirus Receptor Rabbit mAb
Host Species	Rabbit
Clonality	Monoclonal
Isotype	Rabbit IgG
Purification	Affinity-chromatography
Applications	WB IP
Species Reactivity	Human
Specificity	Poliovirus Receptor Antibody detects endogenous levels of total Poliovirus Receptor
Immunogen Description	A synthesized peptide derived from human Poliovirus Receptor
Other Names	CD155; HVED; mE4; Necl5; PVR; PVS; Taa1; TAGE4;
Accession No.	Uniprot:P15151
Uniprot	P15151
Calculated MW	70kDa
Formulation	Rabbit IgG in phosphate buffered saline , pH 7.4, 150mM NaCl, 0.02% sodium azide and 50% glycerol.
Storage	Store at +4°C short term. Store at -20°C long term. Avoid freeze / thaw cycle.

Application Details

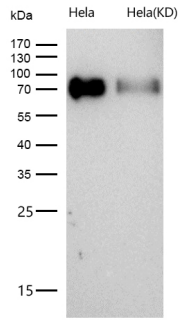
WB 1:500~1:1000 IP 1:40

Images



Western blot analysis of Poliovirus Receptor expression in U87-MG cell lysate.

All lanes use the Antibody at 1:1K dilution for 1 hour at room temperature.



Product Description

Mediates NK cell adhesion and triggers NK cell effector functions. Binds two different NK cell receptors: CD96 and CD226. These interactions accumulates at the cell-cell contact site, leading to the formation of a mature immunological synapse between NK cell and target cell.

Background

Mediates NK cell adhesion and triggers NK cell effector functions. Binds two different NK cell receptors: CD96 and CD226. These interactions accumulates at the cell-cell contact site, leading to the formation of a mature immunological synapse between NK cell and target cell.

Note: This product is for in vitro research use only