

DCR2 Rabbit mAb

Catalog No: #60008

Package Size: #60008-1 50ul #60008-2 100ul

Orders: order@signalwayantibody.comSupport: tech@signalwayantibody.com

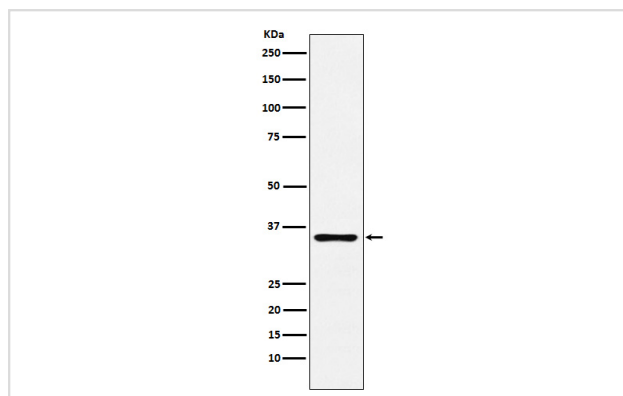
Description

Product Name	DCR2 Rabbit mAb
Host Species	Rabbit
Clonality	Monoclonal
Isotype	Rabbit IgG
Purification	Affinity-chromatography
Applications	WB IHC ICC/IF
Species Reactivity	Human
Specificity	DCR2 Antibody detects endogenous levels of total DCR2
Immunogen Description	A synthesized peptide derived from human DCR2
Other Names	DcR2; TRAIL receptor 4; TRAIL-R4; CD264; TNFRSF10D; DCR2; TRAILR4; TRUNDD;
Accession No.	Uniprot:Q9UBN6
Uniprot	Q9UBN6
Formulation	Rabbit IgG in phosphate buffered saline , pH 7.4, 150mM NaCl, 0.02% sodium azide and 50% glycerol.
Storage	Store at +4°C short term. Store at -20°C long term. Avoid freeze / thaw cycle.

Application Details

WB 1:500~1:2000 IHC 1:50~1:200 ICC/IF 1:50~1:200

Images



Western blot analysis of DCR2 expression in Human prostate lysate.

Product Description

Receptor for the cytotoxic ligand TRAIL. Contains a truncated death domain and hence is not capable of inducing apoptosis but protects against TRAIL-mediated apoptosis. Reports are contradictory with regards to its ability to induce the NF-kappa-B pathway.

Background

Receptor for the cytotoxic ligand TRAIL. Contains a truncated death domain and hence is not capable of inducing apoptosis but protects against TRAIL-mediated apoptosis. Reports are contradictory with regards to its ability to induce the NF-kappa-B pathway.

Note: This product is for in vitro research use only