

## Angiotensinogen Rabbit mAb

Catalog No: #60010

Package Size: #60010-1 50ul #60010-2 100ul

Orders: order@signalwayantibody.com

Support: tech@signalwayantibody.com

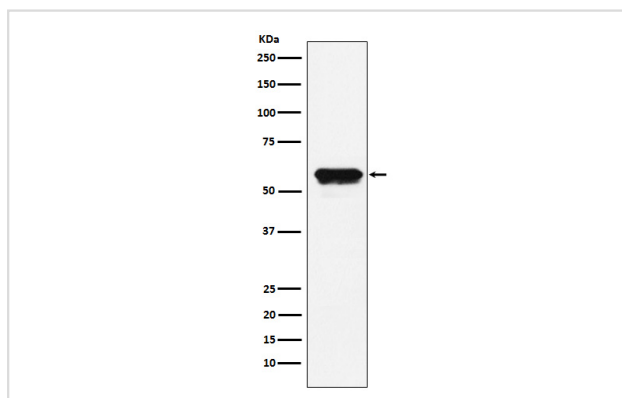
## Description

Product Name	Angiotensinogen Rabbit mAb
Host Species	Rabbit
Clonality	Monoclonal
Isotype	Rabbit IgG
Purification	Affinity-chromatography
Applications	WB ICC/IF IP FC
Species Reactivity	Human
Specificity	Angiotensinogen Antibody detects endogenous levels of total Angiotensinogen
Immunogen Description	A synthesized peptide derived from human Angiotensinogen
Other Names	AGT; Ang; Ang I; Ang II; Ang III; Angiotensinogen; ANHU; ANRT; AT-2; AT-II; PAT; Pre angiotensinogen; Serpin A8; SERPINA8;
Accession No.	Uniprot:P01019
Uniprot	P01019
Formulation	Rabbit IgG in phosphate buffered saline , pH 7.4, 150mM NaCl, 0.02% sodium azide and 50% glycerol.
Storage	Store at +4°C short term. Store at -20°C long term. Avoid freeze / thaw cycle.

## Application Details

WB 1:1000~1:5000 ICC/IF 1:100~1:500 IP 1:50 FC 1:100

## Images



Western blot analysis of Angiotensinogen expression in HepG2 cell lysate.

## Product Description

Essential component of the renin-angiotensin system (RAS), a potent regulator of blood pressure, body fluid and electrolyte homeostasis. In response to lowered blood pressure, the enzyme renin cleaves angiotensinogen to produce angiotensin-1 (angiotensin 1-10).

## Background

---

Essential component of the renin-angiotensin system (RAS), a potent regulator of blood pressure, body fluid and electrolyte homeostasis. In response to lowered blood pressure, the enzyme renin cleaves angiotensinogen to produce angiotensin-1 (angiotensin 1-10).

---

Note: This product is for in vitro research use only