

## TRAP1 Rabbit mAb

Catalog No: #60013

Package Size: #60013-1 50ul #60013-2 100ul

Orders: order@signalwayantibody.com

Support: tech@signalwayantibody.com

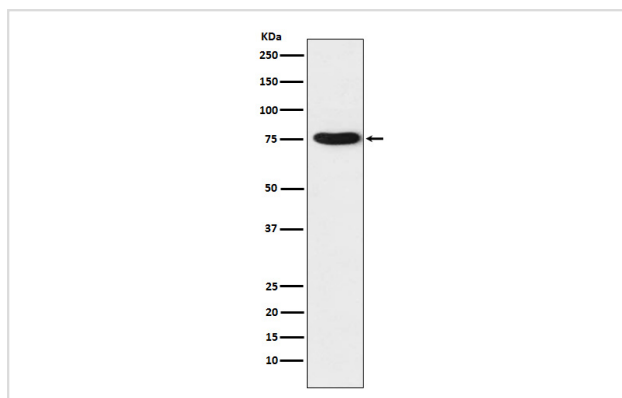
## Description

Product Name	TRAP1 Rabbit mAb
Host Species	Rabbit
Clonality	Monoclonal
Isotype	Rabbit IgG
Purification	Affinity-chromatography
Applications	WB IHC ICC/IF
Species Reactivity	Human
Specificity	TRAP1 Antibody detects endogenous levels of total TRAP1
Immunogen Description	A synthesized peptide derived from human TRAP1
Other Names	HSP75; HSP90L; Trap1;
Accession No.	Uniprot:Q12931
Uniprot	Q12931
Formulation	Rabbit IgG in phosphate buffered saline , pH 7.4, 150mM NaCl, 0.02% sodium azide and 50% glycerol.
Storage	Store at +4°C short term. Store at -20°C long term. Avoid freeze / thaw cycle.

## Application Details

WB 1:1000~1:5000 IHC 1:50~1:200 ICC/IF 1:100~1:500

## Images



Western blot analysis of TRAP1 expression in K562 cell lysate.

## Product Description

Chaperone that expresses an ATPase activity.

## Background

Chaperone that expresses an ATPase activity.

---

Note: This product is for in vitro research use only