

## MCM4 Rabbit mAb

Catalog No: #60015

Package Size: #60015-1 50ul #60015-2 100ul

Orders: [order@signalwayantibody.com](mailto:order@signalwayantibody.com)Support: [tech@signalwayantibody.com](mailto:tech@signalwayantibody.com)

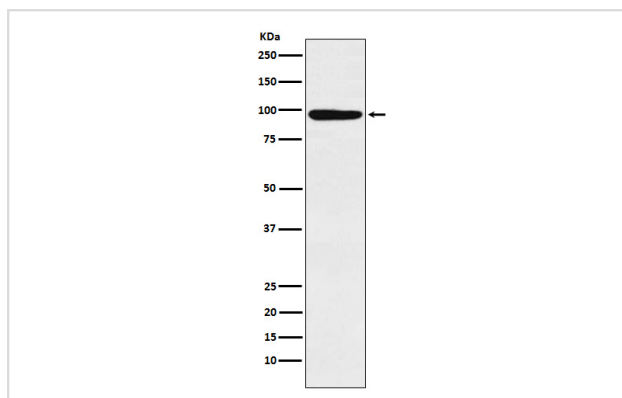
## Description

Product Name	MCM4 Rabbit mAb
Host Species	Rabbit
Clonality	Monoclonal
Isotype	Rabbit IgG
Purification	Affinity-chromatography
Applications	WB IP FC
Species Reactivity	Human Mouse
Specificity	MCM4 Antibody detects endogenous levels of total MCM4
Immunogen Description	A synthesized peptide derived from human MCM4
Other Names	CDC21; CDC54; hCdc21; P1-CDC21;
Accession No.	Uniprot:P33991
Uniprot	P33991
Formulation	Rabbit IgG in phosphate buffered saline , pH 7.4, 150mM NaCl, 0.02% sodium azide and 50% glycerol.
Storage	Store at +4°C short term. Store at -20°C long term. Avoid freeze / thaw cycle.

## Application Details

WB 1:1000~1:5000 IP 1:50 FC 1:100

## Images



Western blot analysis of MCM4 expression in Molt-4 cell lysate.

## Product Description

Acts as component of the MCM2-7 complex (MCM complex) which is the putative replicative helicase essential for 'once per cell cycle' DNA replication initiation and elongation in eukaryotic cells.

## Background

---

Acts as component of the MCM2-7 complex (MCM complex) which is the putative replicative helicase essential for 'once per cell cycle' DNA replication initiation and elongation in eukaryotic cells.

---

Note: This product is for in vitro research use only