

## TEAD1 Rabbit mAb

Catalog No: #60016

Package Size: #60016-1 50ul #60016-2 100ul

Orders: order@signalwayantibody.com

Support: tech@signalwayantibody.com

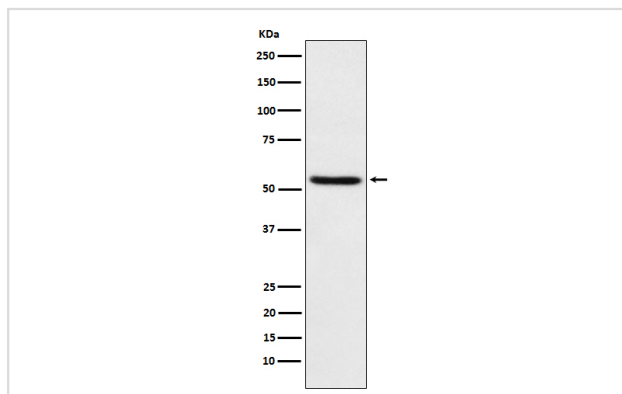
## Description

Product Name	TEAD1 Rabbit mAb
Host Species	Rabbit
Clonality	Monoclonal
Isotype	Rabbit IgG
Purification	Affinity-chromatography
Applications	WB IHC IP
Species Reactivity	Human Mouse Rat
Specificity	TEAD1 Antibody detects endogenous levels of total TEAD1
Immunogen Description	A synthesized peptide derived from human TEAD1
Other Names	NTEF1; Protein GT IIC; REF1; TCF13; TEA domain family member 1; TEAD1; TEF1; Transcription factor 13; Transcriptional enhancer factor TEF1;
Accession No.	Uniprot:P28347
Uniprot	P28347
Calculated MW	52kDa
Formulation	Rabbit IgG in phosphate buffered saline , pH 7.4, 150mM NaCl, 0.02% sodium azide and 50% glycerol.
Storage	Store at +4°C short term. Store at -20°C long term. Avoid freeze / thaw cycle.

## Application Details

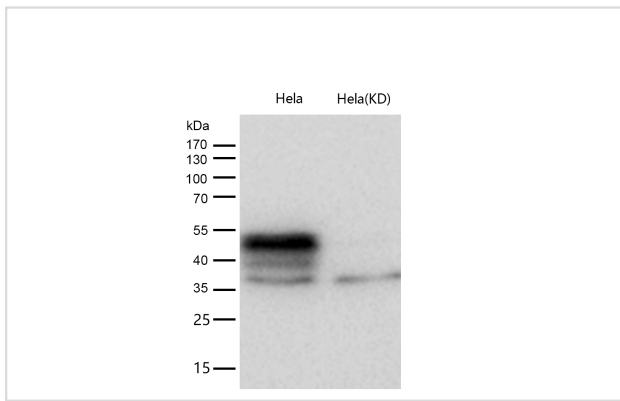
WB 1:1000~1:5000 IHC 1:100~1:500 IP 1:50

## Images



Western blot analysis of TEAD1 expression in HeLa cell lysate.

All lanes use the Antibody at 1:3K dilution for 1 hour at room temperature.



## Product Description

Transcription factor which plays a key role in the Hippo signaling pathway, a pathway involved in organ size control and tumor suppression by restricting proliferation and promoting apoptosis.

## Background

Transcription factor which plays a key role in the Hippo signaling pathway, a pathway involved in organ size control and tumor suppression by restricting proliferation and promoting apoptosis.

Note: This product is for in vitro research use only