

CLPP Rabbit mAb

Catalog No: #60019

Package Size: #60019-1 50ul #60019-2 100ul

Orders: order@signalwayantibody.com

Support: tech@signalwayantibody.com

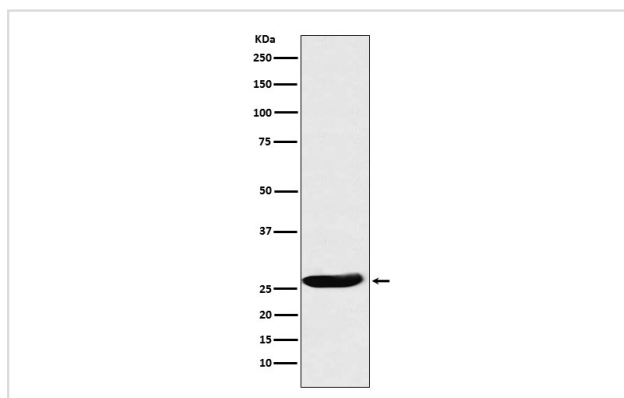
Description

Product Name	CLPP Rabbit mAb
Host Species	Rabbit
Clonality	Monoclonal
Isotype	Rabbit IgG
Purification	Affinity-chromatography
Applications	WB IHC IP
Species Reactivity	Human Mouse Rat
Specificity	CLPP Antibody detects endogenous levels of total CLPP
Immunogen Description	A synthesized peptide derived from human CLPP
Other Names	Endopeptidase Clp;
Accession No.	Uniprot:Q16740
Uniprot	Q16740
Calculated MW	26kDa
Formulation	Rabbit IgG in phosphate buffered saline , pH 7.4, 150mM NaCl, 0.02% sodium azide and 50% glycerol.
Storage	Store at +4°C short term. Store at -20°C long term. Avoid freeze / thaw cycle.

Application Details

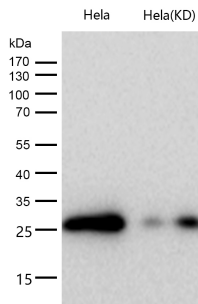
WB 1:500~1:2000 IHC 1:50~1:200 IP 1:50

Images



Western blot analysis of CLPP expression in A431 cell lysate.

All lanes use the Antibody at 1:1K dilution for 1 hour at room temperature.



Product Description

Clp cleaves peptides in various proteins in a process that requires ATP hydrolysis. Clp may be responsible for a fairly general and central housekeeping function rather than for the degradation of specific substrates.

Background

Clp cleaves peptides in various proteins in a process that requires ATP hydrolysis. Clp may be responsible for a fairly general and central housekeeping function rather than for the degradation of specific substrates.

Note: This product is for in vitro research use only