

## SAP97 Rabbit mAb

Catalog No: #60020

Package Size: #60020-1 50ul #60020-2 100ul

Orders: order@signalwayantibody.com

Support: tech@signalwayantibody.com

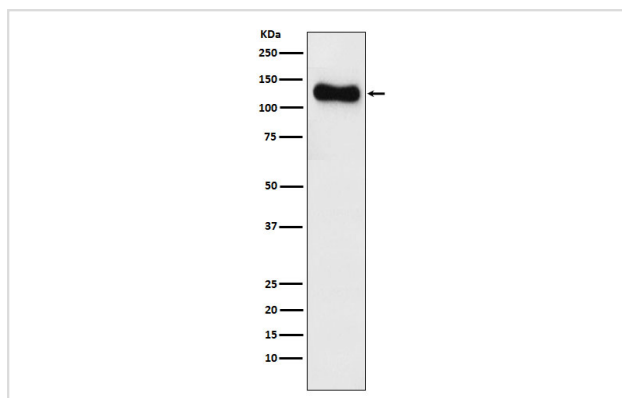
## Description

Product Name	SAP97 Rabbit mAb
Host Species	Rabbit
Clonality	Monoclonal
Isotype	Rabbit IgG
Purification	Affinity-chromatography
Applications	WB
Species Reactivity	Human Mouse Rat
Specificity	SAP97 Antibody detects endogenous levels of total SAP97
Immunogen Description	A synthesized peptide derived from human SAP97
Other Names	DLG1; DLGH1; hDlg; SAP97;
Accession No.	Uniprot:Q12959
Uniprot	Q12959
Formulation	Rabbit IgG in phosphate buffered saline , pH 7.4, 150mM NaCl, 0.02% sodium azide and 50% glycerol.
Storage	Store at +4°C short term. Store at -20°C long term. Avoid freeze / thaw cycle.

## Application Details

WB 1:500~1:2000

## Images



Western blot analysis of SAP97 expression in SH-SY5Y cell lysate.

## Product Description

Essential multidomain scaffolding protein required for normal development (By similarity). Recruits channels, receptors and signaling molecules to discrete plasma membrane domains in polarized cells.

## Background

---

Essential multidomain scaffolding protein required for normal development (By similarity). Recruits channels, receptors and signaling molecules to discrete plasma membrane domains in polarized cells.

---

Note: This product is for in vitro research use only