

ERAP1 Rabbit mAb

Catalog No: #60021

Package Size: #60021-1 50ul #60021-2 100ul

Orders: order@signalwayantibody.com

Support: tech@signalwayantibody.com

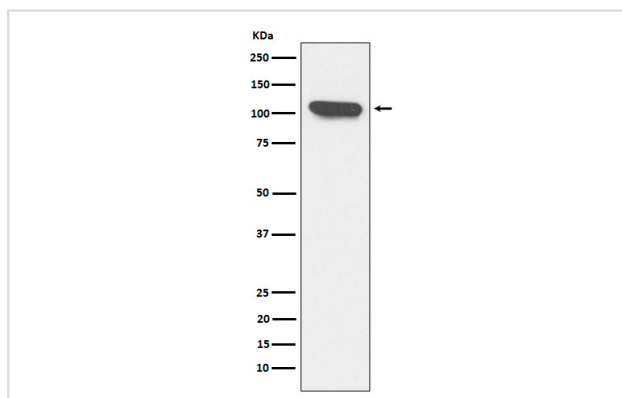
Description

Product Name	ERAP1 Rabbit mAb
Host Species	Rabbit
Clonality	Monoclonal
Isotype	Rabbit IgG
Purification	Affinity-chromatography
Applications	WB IHC
Species Reactivity	Human Mouse Rat
Specificity	ERAP1 Antibody detects endogenous levels of total ERAP1
Immunogen Description	A synthesized peptide derived from human ERAP1
Other Names	ALAP; Aminopeptidase PILS; APPILS; Arts1; Endoplasmic reticulum aminopeptidase 1; ERAAP; ERAAP1; Erap1; PILSA; PILSAP;
Accession No.	Uniprot:Q9NZ08
Uniprot	Q9NZ08
Formulation	Rabbit IgG in phosphate buffered saline , pH 7.4, 150mM NaCl, 0.02% sodium azide and 50% glycerol.
Storage	Store at +4°C short term. Store at -20°C long term. Avoid freeze / thaw cycle.

Application Details

WB 1:500~1:2000 IHC 1:50~1:200

Images



Western blot analysis of ERAP1 expression in K562 cell lysate.

Product Description

Aminopeptidase that plays a central role in peptide trimming, a step required for the generation of most HLA class I-binding peptides. Peptide trimming is essential to customize longer precursor peptides to fit them to the correct length required for presentation on MHC class I molecules. Strongly prefers substrates 9-16 residues long.

Background

Aminopeptidase that plays a central role in peptide trimming, a step required for the generation of most HLA class I-binding peptides. Peptide trimming is essential to customize longer precursor peptides to fit them to the correct length required for presentation on MHC class I molecules. Strongly prefers substrates 9-16 residues long.

Note: This product is for in vitro research use only