

KIFAP3 Rabbit mAb

Catalog No: #60023

Package Size: #60023-1 50ul #60023-2 100ul

Orders: order@signalwayantibody.com

Support: tech@signalwayantibody.com

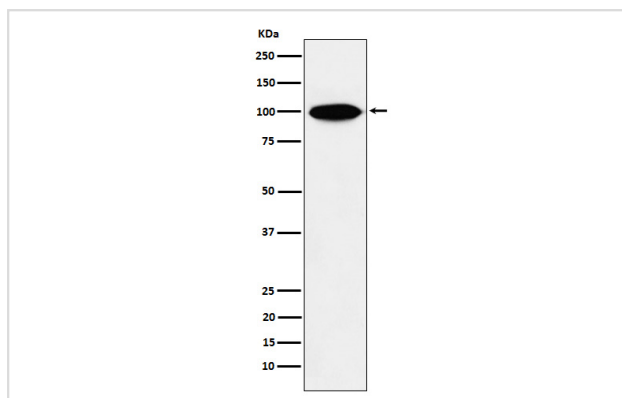
Description

Product Name	KIFAP3 Rabbit mAb
Host Species	Rabbit
Clonality	Monoclonal
Isotype	Rabbit IgG
Purification	Affinity-chromatography
Applications	WB IHC ICC/IF FC
Species Reactivity	Human Mouse Rat
Specificity	KIFAP3 Antibody detects endogenous levels of total KIFAP3
Immunogen Description	A synthesized peptide derived from human KIFAP3
Other Names	KAP3; KIF3AP; Kifap3; Kinesin associated protein 3; SMAP;
Accession No.	Uniprot:Q92845
Uniprot	Q92845
Formulation	Rabbit IgG in phosphate buffered saline , pH 7.4, 150mM NaCl, 0.02% sodium azide and 50% glycerol.
Storage	Store at +4°C short term. Store at -20°C long term. Avoid freeze / thaw cycle.

Application Details

WB 1:500~1:2000 IHC 1:50~1:200 ICC/IF 1:50~1:200 FC 1:50

Images



Western blot analysis of KIFAP3 expression in HeLa cell lysate.

Product Description

Involved in tethering the chromosomes to the spindle pole and in chromosome movement. Binds to the tail domain of the KIF3A/KIF3B heterodimer to form a heterotrimeric KIF3 complex and may regulate the membrane binding of this complex.

Background

Involved in tethering the chromosomes to the spindle pole and in chromosome movement. Binds to the tail domain of the KIF3A/KIF3B heterodimer to form a heterotrimeric KIF3 complex and may regulate the membrane binding of this complex.

Note: This product is for in vitro research use only