

DNA Polymerase gamma Rabbit mAb

Catalog No: #60026

Package Size: #60026-1 50ul #60026-2 100ul

Orders: order@signalwayantibody.com

Support: tech@signalwayantibody.com

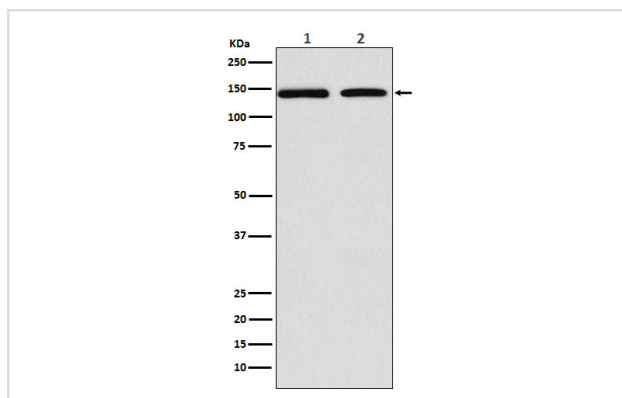
Description

Product Name	DNA Polymerase gamma Rabbit mAb
Host Species	Rabbit
Clonality	Monoclonal
Isotype	Rabbit IgG
Purification	Affinity-chromatography
Applications	WB
Species Reactivity	Human Mouse Rat
Specificity	DNA Polymerase gamma Antibody detects endogenous levels of total DNA Polymerase gamma
Immunogen Description	A synthesized peptide derived from human DNA Polymerase gamma
Other Names	MDP1; PEO; PolG alpha; POLG; POLG1; POLGA; SANDO; SCAE;
Accession No.	Uniprot:P54098
Uniprot	P54098
Formulation	Rabbit IgG in phosphate buffered saline , pH 7.4, 150mM NaCl, 0.02% sodium azide and 50% glycerol.
Storage	Store at +4°C short term. Store at -20°C long term. Avoid freeze / thaw cycle.

Application Details

WB 1:500~1:2000

Images



Western blot analysis of DNA Polymerase gamma expression in (1) MCF7 cell lysate; (2) RAW264.7 cell lysate.

Product Description

Involved in the replication of mitochondrial DNA.

Background

Involved in the replication of mitochondrial DNA.

Note: This product is for in vitro research use only