

## Arp2 Rabbit mAb

Catalog No: #60027

Package Size: #60027-1 50ul #60027-2 100ul

Orders: order@signalwayantibody.com

Support: tech@signalwayantibody.com

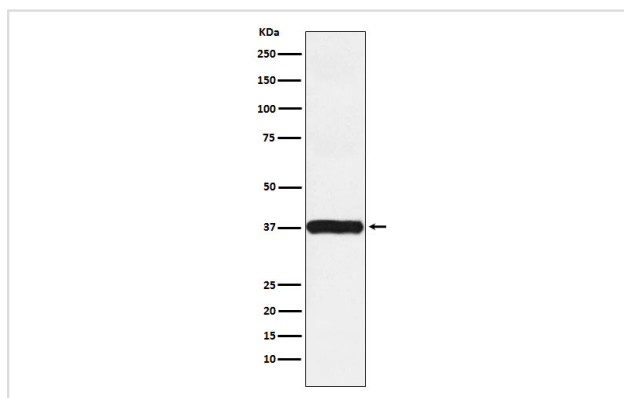
## Description

Product Name	Arp2 Rabbit mAb
Host Species	Rabbit
Clonality	Monoclonal
Isotype	Rabbit IgG
Purification	Affinity-chromatography
Applications	WB IHC ICC/IF
Species Reactivity	Human Mouse Rat
Specificity	Arp2 Antibody detects endogenous levels of total Arp2
Immunogen Description	A synthesized peptide derived from human Arp2
Other Names	ACTR2; ARP2; ARP2/3 COMPLEX;
Accession No.	Uniprot:P61160
Uniprot	P61160
Calculated MW	37kDa
Formulation	Rabbit IgG in phosphate buffered saline , pH 7.4, 150mM NaCl, 0.02% sodium azide and 50% glycerol.
Storage	Store at +4°C short term. Store at -20°C long term. Avoid freeze / thaw cycle.

## Application Details

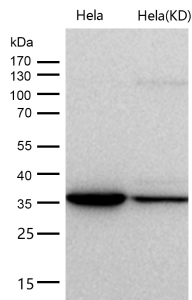
WB 1:500~1:2000 IHC 1:50~1:200 ICC/IF 1:50~1:200

## Images



Western blot analysis of Arp2 expression in HUVEC cell lysate.

All lanes use the Antibody at 1:1K dilution for 1 hour at room temperature.



## Product Description

Functions as ATP-binding component of the Arp2/3 complex which is involved in regulation of actin polymerization and together with an activating nucleation-promoting factor (NPF) mediates the formation of branched actin networks.

## Background

Functions as ATP-binding component of the Arp2/3 complex which is involved in regulation of actin polymerization and together with an activating nucleation-promoting factor (NPF) mediates the formation of branched actin networks.

Note: This product is for in vitro research use only