

## PEAR1 Antibody

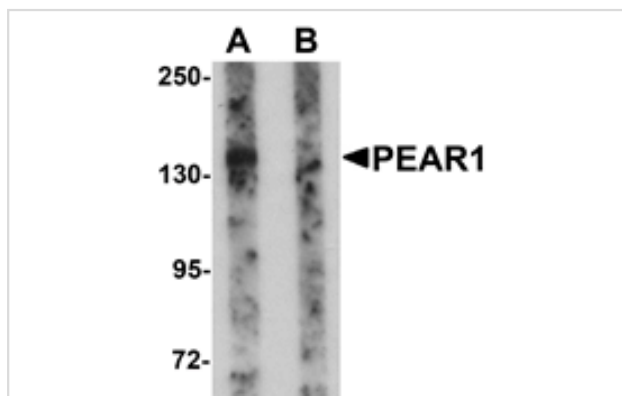
Catalog No: #25220

Orders: [order@signalwayantibody.com](mailto:order@signalwayantibody.com)Support: [tech@signalwayantibody.com](mailto:tech@signalwayantibody.com)

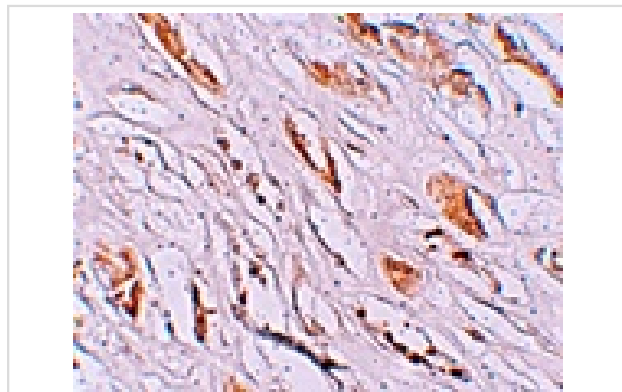
## Description

Product Name	PEAR1 Antibody
Host Species	Rabbit
Clonality	Polyclonal
Purification	Affinity chromatography purified via peptide column
Applications	ELISA WB IHC
Species Reactivity	Hu Ms Rt
Immunogen Type	Peptide
Immunogen Description	Raised against a 16 amino acid peptide near the carboxy terminus of human PEAR1.
Target Name	PEAR1
Other Names	Platelet endothelial aggregation receptor 1
Accession No.	Swiss-Prot:Q5VY43Gene ID:375033
Uniprot	Q5VY43
GeneID	375033;
Concentration	1mg/ml
Formulation	Supplied in PBS containing 0.02% sodium azide.
Storage	Can be stored at -20°C, stable for one year. As with all antibodies care should be taken to avoid repeated freeze thaw cycles. Antibodies should not be exposed to prolonged high temperatures.

## Images



Western blot analysis of PEAR1 in rat kidney tissue lysate with PEAR1 antibody at 1 ug/mL in (A) the absence and (B) the presence of blocking peptide.



Immunohistochemistry of PEAR1 in human kidney tissue with PEAR1 antibody at 2.5 ug/mL.

## Background

---

Platelet endothelial aggregation receptor 1 (PEAR1) is a platelet receptor that signals upon the formation of platelet-platelet contacts independent of platelet activation and secondary to platelet aggregation. Upon platelet aggregation stimulated by physiological agonists, PEAR1 becomes tyrosine- and serine-phosphorylated; the tyrosine phosphorylation can be inhibited by eptifibatid, an  $\alpha$ IIb $\beta$ 3 antagonist that also inhibits platelet aggregation. Recent studies have indicated that genetic variations in PEAR1, may be associated with enhanced agonist-induced platelet aggregation.

---

Note: This product is for in vitro research use only