

## CD35 Rabbit mAb

Catalog No: #60034

Package Size: #60034-1 50ul #60034-2 100ul

Orders: order@signalwayantibody.com

Support: tech@signalwayantibody.com

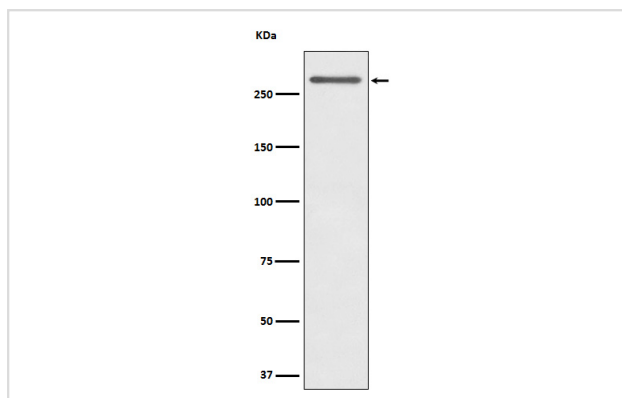
## Description

Product Name	CD35 Rabbit mAb
Host Species	Rabbit
Clonality	Monoclonal
Isotype	Rabbit IgG
Purification	Affinity-chromatography
Applications	WB IHC
Species Reactivity	Human
Specificity	CD35 Antibody detects endogenous levels of total CD35
Immunogen Description	A synthesized peptide derived from human CD35
Other Names	C3BR; C4BR CD35; CR1; Knops blood group antigen;
Accession No.	Uniprot:P17927
Uniprot	P17927
Formulation	Rabbit IgG in phosphate buffered saline , pH 7.4, 150mM NaCl, 0.02% sodium azide and 50% glycerol.
Storage	Store at +4°C short term. Store at -20°C long term. Avoid freeze / thaw cycle.

## Application Details

WB 1:500~1:2000 IHC 1:50~1:200

## Images



Western blot analysis of CD35 expression in Human tonsil cell lysate.

## Product Description

Mediates cellular binding of particles and immune complexes that have activated complement.

## Background

Mediates cellular binding of particles and immune complexes that have activated complement.

---

Note: This product is for in vitro research use only