

## XPD Rabbit mAb

Catalog No: #60037

Package Size: #60037-1 50ul #60037-2 100ul

Orders: order@signalwayantibody.com

Support: tech@signalwayantibody.com

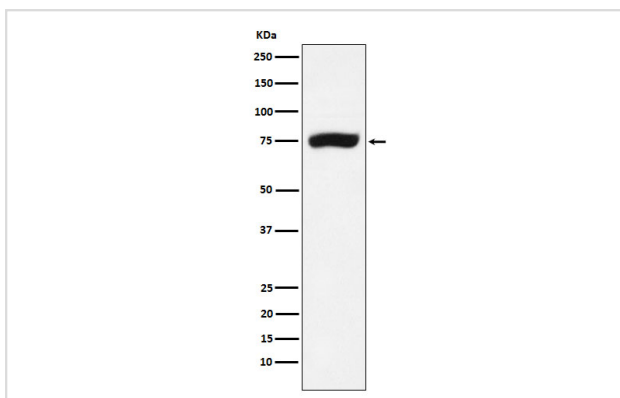
## Description

Product Name	XPD Rabbit mAb
Host Species	Rabbit
Clonality	Monoclonal
Isotype	Rabbit IgG
Purification	Affinity-chromatography
Applications	WB IHC ICC/IF
Species Reactivity	Human
Specificity	XPD Antibody detects endogenous levels of total XPD
Immunogen Description	A synthesized peptide derived from human XPD
Other Names	BTF2 p80; COFS2; CXPB; EM9; ERCC2; MAG; TFIIH p80; TTD; XPD; XPDC;
Accession No.	Uniprot:P18074
Uniprot	P18074
Formulation	Rabbit IgG in phosphate buffered saline , pH 7.4, 150mM NaCl, 0.02% sodium azide and 50% glycerol.
Storage	Store at +4°C short term. Store at -20°C long term. Avoid freeze / thaw cycle.

## Application Details

WB 1:500~1:2000 IHC 1:50~1:200 ICC/IF 1:50~1:200

## Images



Western blot analysis of XPD expression in A431 cell lysate.

## Product Description

ATP-dependent 5'-3' DNA helicase, component of the core-TFIIH basal transcription factor. Involved in nucleotide excision repair (NER) of DNA by opening DNA around the damage, and in RNA transcription by RNA polymerase II by anchoring the CDK-activating kinase (CAK) complex, composed of CDK7, cyclin H and MAT1, to the core-TFIIH complex. Involved in the regulation of vitamin-D receptor activity.

## Background

---

ATP-dependent 5'-3' DNA helicase, component of the core-TFIID basal transcription factor. Involved in nucleotide excision repair (NER) of DNA by opening DNA around the damage, and in RNA transcription by RNA polymerase II by anchoring the CDK-activating kinase (CAK) complex, composed of CDK7, cyclin H and MAT1, to the core-TFIID complex. Involved in the regulation of vitamin-D receptor activity.

---

Note: This product is for in vitro research use only