

## PLA2G2A Rabbit mAb

Catalog No: #60040

Package Size: #60040-1 50ul #60040-2 100ul

Orders: order@signalwayantibody.com

Support: tech@signalwayantibody.com

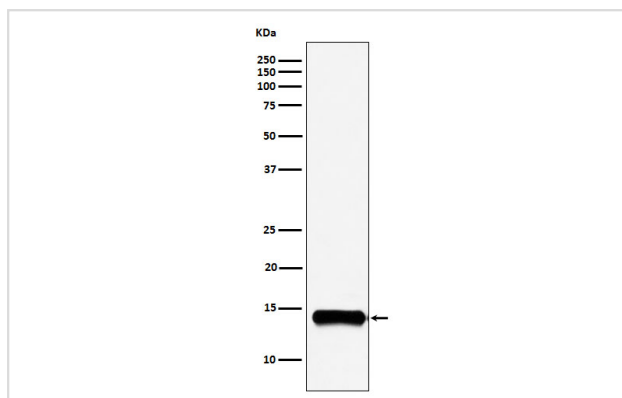
## Description

Product Name	PLA2G2A Rabbit mAb
Host Species	Rabbit
Clonality	Monoclonal
Isotype	Rabbit IgG
Purification	Affinity-chromatography
Applications	WB
Species Reactivity	Human Mouse Rat
Specificity	PLA2G2A Antibody detects endogenous levels of total PLA2G2A
Immunogen Description	A synthesized peptide derived from human PLA2G2A
Other Names	MOM1; PLA2; PLA2B; PLA2L; PLA2S; PLAS1; sPLA2;
Accession No.	Uniprot:P14555
Uniprot	P14555
Formulation	Rabbit IgG in phosphate buffered saline , pH 7.4, 150mM NaCl, 0.02% sodium azide and 50% glycerol.
Storage	Store at +4°C short term. Store at -20°C long term. Avoid freeze / thaw cycle.

## Application Details

WB 1:500~1:2000

## Images



Western blot analysis of PLA2G2A expression in A549 cell lysate.

## Product Description

Thought to participate in the regulation of the phospholipid metabolism in biomembranes including eicosanoid biosynthesis. Catalyzes the calcium-dependent hydrolysis of the 2-acyl groups in 3-sn-phosphoglycerides.

## Background

---

Thought to participate in the regulation of the phospholipid metabolism in biomembranes including eicosanoid biosynthesis. Catalyzes the calcium-dependent hydrolysis of the 2-acyl groups in 3-sn-phosphoglycerides.

---

Note: This product is for in vitro research use only