

## KGF Rabbit mAb

Catalog No: #60045

Package Size: #60045-1 50ul #60045-2 100ul

Orders: order@signalwayantibody.com

Support: tech@signalwayantibody.com

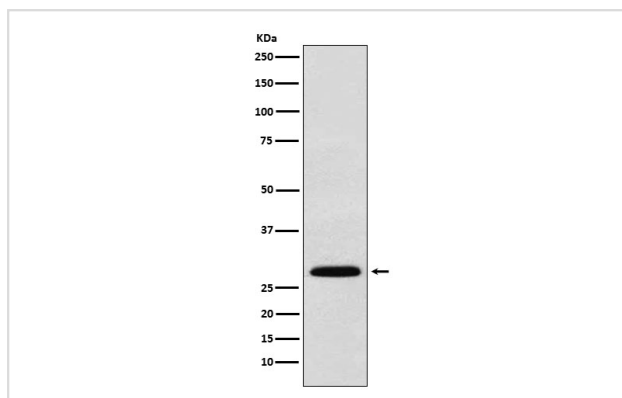
## Description

Product Name	KGF Rabbit mAb
Host Species	Rabbit
Clonality	Monoclonal
Isotype	Rabbit IgG
Purification	Affinity-chromatography
Applications	WB
Species Reactivity	Human Mouse Rat
Specificity	KGF Antibody detects endogenous levels of total KGF
Immunogen Description	A synthesized peptide derived from human KGF
Other Names	Fgf7; Fibroblast growth factor 7; HBGF7; Heparin binding growth factor 7; Keratinocyte growth factor;
Accession No.	Uniprot:P21781
Uniprot	P21781
Formulation	Rabbit IgG in phosphate buffered saline , pH 7.4, 150mM NaCl, 0.02% sodium azide and 50% glycerol.
Storage	Store at +4°C short term. Store at -20°C long term. Avoid freeze / thaw cycle.

## Application Details

WB 1:500~1:2000

## Images



Western blot analysis of KGF expression in 293T cell lysate.

## Product Description

Growth factor active on keratinocytes. Possible major paracrine effector of normal epithelial cell proliferation.

## Background

Growth factor active on keratinocytes. Possible major paracrine effector of normal epithelial cell proliferation.

---

Note: This product is for in vitro research use only