

## NME2 Rabbit mAb

Catalog No: #60046

Package Size: #60046-1 50ul #60046-2 100ul

Orders: [order@signalwayantibody.com](mailto:order@signalwayantibody.com)Support: [tech@signalwayantibody.com](mailto:tech@signalwayantibody.com)

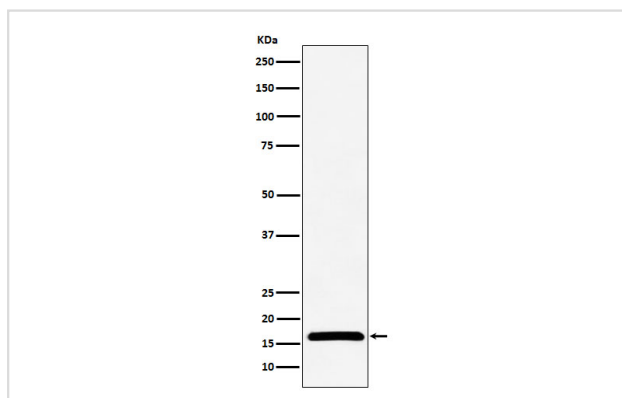
## Description

Product Name	NME2 Rabbit mAb
Host Species	Rabbit
Clonality	Monoclonal
Isotype	Rabbit IgG
Purification	Affinity-chromatography
Applications	WB IHC ICC/IF FC
Species Reactivity	Human Mouse Rat
Specificity	NME2 Antibody detects endogenous levels of total NME2
Immunogen Description	A synthesized peptide derived from human NME2
Other Names	C myc purine binding transcription factor PUF; MGC2212; NDKB; NDP kinase B; NDPKB; NM23B; Nucleoside diphosphate kinase B; PUF;
Accession No.	Uniprot:P22392
Uniprot	P22392
Formulation	Rabbit IgG in phosphate buffered saline , pH 7.4, 150mM NaCl, 0.02% sodium azide and 50% glycerol.
Storage	Store at +4°C short term. Store at -20°C long term. Avoid freeze / thaw cycle.

## Application Details

WB 1:500~1:2000 IHC 1:50~1:200 ICC/IF 1:50~1:200 FC 1:50

## Images



Western blot analysis of NME2 expression in LnCaP cell lysate.

## Product Description

Major role in the synthesis of nucleoside triphosphates other than ATP. Negatively regulates Rho activity by interacting with AKAP13/LBC.

## Background

---

Major role in the synthesis of nucleoside triphosphates other than ATP. Negatively regulates Rho activity by interacting with AKAP13/LBC.

---

Note: This product is for in vitro research use only