

## Caveolin-3 Rabbit mAb

Catalog No: #60051

Package Size: #60051-1 50ul #60051-2 100ul

Orders: order@signalwayantibody.com

Support: tech@signalwayantibody.com

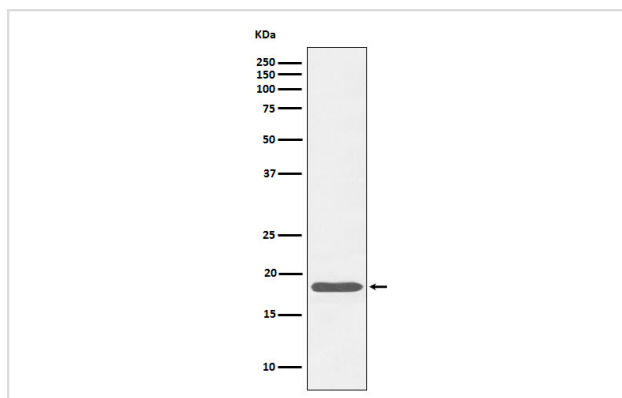
## Description

Product Name	Caveolin-3 Rabbit mAb
Host Species	Rabbit
Clonality	Monoclonal
Isotype	Rabbit IgG
Purification	Affinity-chromatography
Applications	WB IHC IP
Species Reactivity	Human
Specificity	Caveolin-3 Antibody detects endogenous levels of total Caveolin-3
Immunogen Description	A synthesized peptide derived from Caveolin-3
Other Names	CAV3; Caveolin 3; LGMD1C; LQT9; M-caveolin; VIP21;
Accession No.	Uniprot:P56539
Uniprot	P56539
Formulation	Rabbit IgG in phosphate buffered saline , pH 7.4, 150mM NaCl, 0.02% sodium azide and 50% glycerol.
Storage	Store at +4°C short term. Store at -20°C long term. Avoid freeze / thaw cycle.

## Application Details

WB 1:500~1:2000 IHC 1:50~1:200 IP 1:50

## Images



Western blot analysis of Caveolin-3 expression in human skeletal muscle cell lysate.

## Product Description

May act as a scaffolding protein within caveolar membranes. Interacts directly with G-protein alpha subunits and can functionally regulate their activity. May also regulate voltage-gated potassium channels. Plays a role in the sarcolemma repair mechanism of both skeletal muscle and cardiomyocytes that permits rapid resealing of membranes disrupted by mechanical stress.

## Background

---

May act as a scaffolding protein within caveolar membranes. Interacts directly with G-protein alpha subunits and can functionally regulate their activity. May also regulate voltage-gated potassium channels. Plays a role in the sarcolemma repair mechanism of both skeletal muscle and cardiomyocytes that permits rapid resealing of membranes disrupted by mechanical stress.

---

Note: This product is for in vitro research use only