

## QK1 Rabbit mAb

Catalog No: #60060

Package Size: #60060-1 50ul #60060-2 100ul

Orders: order@signalwayantibody.com

Support: tech@signalwayantibody.com

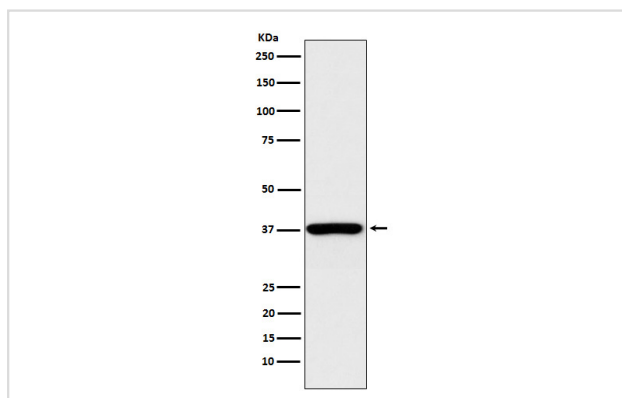
## Description

Product Name	QK1 Rabbit mAb
Host Species	Rabbit
Clonality	Monoclonal
Isotype	Rabbit IgG
Purification	Affinity-chromatography
Applications	WB ICC/IF IP
Species Reactivity	Human Mouse
Specificity	QK1 Antibody detects endogenous levels of total QK1
Immunogen Description	A synthesized peptide derived from QK1
Other Names	HKQ; Hqk; HQK1; Hqkl; QK1; QK3; QKI; QKI1;
Accession No.	Uniprot:Q96PU8
Uniprot	Q96PU8
Calculated MW	38kDa
Formulation	Rabbit IgG in phosphate buffered saline , pH 7.4, 150mM NaCl, 0.02% sodium azide and 50% glycerol.
Storage	Store at +4°C short term. Store at -20°C long term. Avoid freeze / thaw cycle.

## Application Details

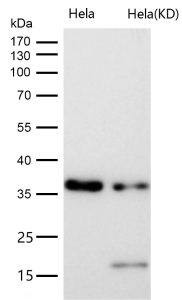
WB 1:500~1:2000 ICC/IF 1:50~1:200 IP 1:50

## Images



Western blot analysis of QK1 expression in K562 cell lysate.

All lanes use the Antibody at 1:1K dilution for 1 hour at room temperature.



## Product Description

RNA-binding protein that plays a central role in myelination (PubMed:16641098). Binds to the 5'-NACUAAY-N(1,20)-UAAY-3' RNA core sequence.

## Background

RNA-binding protein that plays a central role in myelination (PubMed:16641098). Binds to the 5'-NACUAAY-N(1,20)-UAAY-3' RNA core sequence.

Note: This product is for in vitro research use only