

## CARS Rabbit mAb

Catalog No: #60062

Package Size: #60062-1 50ul #60062-2 100ul

Orders: order@signalwayantibody.com

Support: tech@signalwayantibody.com

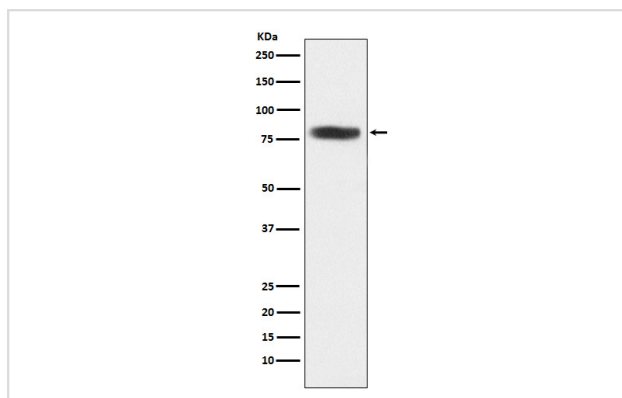
## Description

Product Name	CARS Rabbit mAb
Host Species	Rabbit
Clonality	Monoclonal
Isotype	Rabbit IgG
Purification	Affinity-chromatography
Applications	WB IHC ICC/IF FC
Species Reactivity	Human
Specificity	CARS Antibody detects endogenous levels of total CARS
Immunogen Description	A synthesized peptide derived from CARS
Other Names	Cars; CysRS;
Accession No.	Uniprot:P49589
Uniprot	P49589
Formulation	Rabbit IgG in phosphate buffered saline , pH 7.4, 150mM NaCl, 0.02% sodium azide and 50% glycerol.
Storage	Store at +4°C short term. Store at -20°C long term. Avoid freeze / thaw cycle.

## Application Details

WB 1:500~1:2000 IHC 1:50~1:200 ICC/IF 1:50~1:200 FC 1:50

## Images



Western blot analysis of CARS expression in 293T cell lysate.

## Product Description

Catalytic activity:ATP + L-cysteine + tRNA(Cys) = AMP + diphosphate + L-cysteinyl-tRNA(Cys).

## Background

Catalytic activity:ATP + L-cysteine + tRNA(Cys) = AMP + diphosphate + L-cysteinyl-tRNA(Cys).

---

Note: This product is for in vitro research use only