

CRMP3 Rabbit mAb

Catalog No: #60068

Package Size: #60068-1 50ul #60068-2 100ul

Orders: order@signalwayantibody.comSupport: tech@signalwayantibody.com

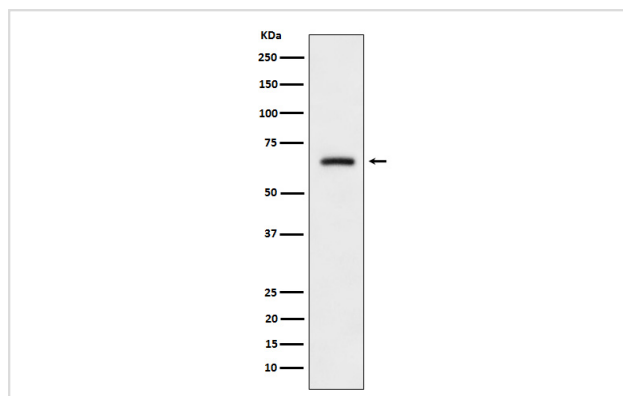
Description

Product Name	CRMP3 Rabbit mAb
Host Species	Rabbit
Clonality	Monoclonal
Isotype	Rabbit IgG
Purification	Affinity-chromatography
Applications	WB
Species Reactivity	Human Mouse Rat
Specificity	CRMP3 Antibody detects endogenous levels of total CRMP3
Immunogen Description	A synthesized peptide derived from human CRMP3
Other Names	CRMP3; DPYSL4; DRP4; ULIP4;
Accession No.	Uniprot:O14531
Uniprot	O14531
Formulation	Rabbit IgG in phosphate buffered saline , pH 7.4, 150mM NaCl, 0.02% sodium azide and 50% glycerol.
Storage	Store at +4°C short term. Store at -20°C long term. Avoid freeze / thaw cycle.

Application Details

WB 1:500~1:2000

Images



Western blot analysis of CRMP3 expression in SH-SY5Y cell lysate.

Product Description

Necessary for signaling by class 3 semaphorins and subsequent remodeling of the cytoskeleton. Plays a role in axon guidance, neuronal growth cone collapse and cell migration.

Background

Necessary for signaling by class 3 semaphorins and subsequent remodeling of the cytoskeleton. Plays a role in axon guidance, neuronal growth cone collapse and cell migration.

Note: This product is for in vitro research use only