

RASA1 Rabbit mAb

Catalog No: #60072

Package Size: #60072-1 50ul #60072-2 100ul

Orders: order@signalwayantibody.comSupport: tech@signalwayantibody.com

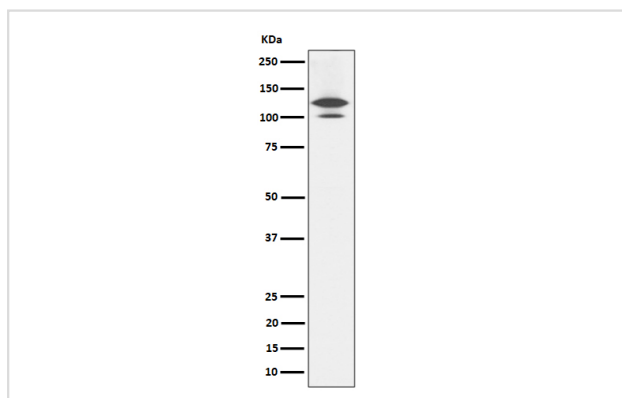
Description

Product Name	RASA1 Rabbit mAb
Host Species	Rabbit
Clonality	Monoclonal
Isotype	Rabbit IgG
Purification	Affinity-chromatography
Applications	WB IHC
Species Reactivity	Human Rat
Specificity	RASA1 Antibody detects endogenous levels of total RASA1
Immunogen Description	A synthesized peptide derived from human RASA1
Other Names	CMAVM; GAP; p120GAP; p120RASGAP; PKWS; RASA; RASA1; RasGAP;
Accession No.	Uniprot:P20936
Uniprot	P20936
Calculated MW	140kDa
Formulation	Rabbit IgG in phosphate buffered saline , pH 7.4, 150mM NaCl, 0.02% sodium azide and 50% glycerol.
Storage	Store at +4°C short term. Store at -20°C long term. Avoid freeze / thaw cycle.

Application Details

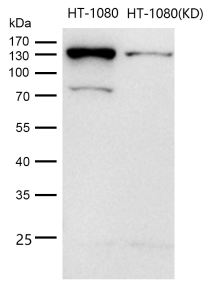
WB 1:500~1:2000 IHC 1:50~1:200

Images



Western blot analysis of RASA1 expression in Rat brain cell lysate.

All lanes use the Antibody at 1:1K dilution for 1 hour at room temperature.



Product Description

Inhibitory regulator of the Ras-cyclic AMP pathway. Stimulates the GTPase of normal but not oncogenic Ras p21.

Background

Inhibitory regulator of the Ras-cyclic AMP pathway. Stimulates the GTPase of normal but not oncogenic Ras p21.

Note: This product is for in vitro research use only