

ORP1 Rabbit mAb

Catalog No: #60074

Package Size: #60074-1 50ul #60074-2 100ul

Orders: order@signalwayantibody.comSupport: tech@signalwayantibody.com

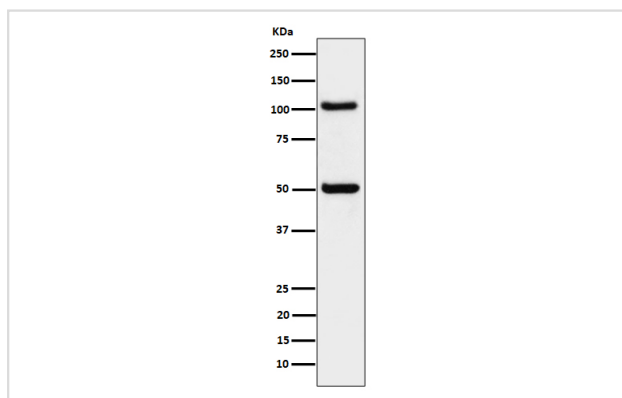
Description

Product Name	ORP1 Rabbit mAb
Host Species	Rabbit
Clonality	Monoclonal
Isotype	Rabbit IgG
Purification	Affinity-chromatography
Applications	WB ICC/IF FC
Species Reactivity	Human Mouse Rat
Specificity	ORP1 Antibody detects endogenous levels of total ORP1
Immunogen Description	A synthesized peptide derived from human ORP1
Other Names	ORP1; OSBP8; OSBPL1; OSBPL1A; OSBPL1B;
Accession No.	Uniprot:Q9BXW6
Uniprot	Q9BXW6
Calculated MW	50,108kDa
Formulation	Rabbit IgG in phosphate buffered saline , pH 7.4, 150mM NaCl, 0.02% sodium azide and 50% glycerol.
Storage	Store at +4°C short term. Store at -20°C long term. Avoid freeze / thaw cycle.

Application Details

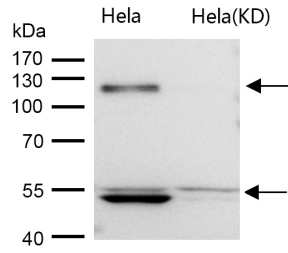
WB 1:500~1:2000 ICC/IF 1:50~1:200 FC 1:50

Images



Western blot analysis of ORP1 expression in 293 cell lysate.

All lanes use the Antibody at 1:1K dilution for 1 hour at room temperature.



Product Description

Binds phospholipids; exhibits strong binding to phosphatidic acid and weak binding to phosphatidylinositol 3-phosphate.

Background

Binds phospholipids; exhibits strong binding to phosphatidic acid and weak binding to phosphatidylinositol 3-phosphate.

Note: This product is for in vitro research use only