

TTF1 Rabbit mAb

Catalog No: #60076

Package Size: #60076-1 50ul #60076-2 100ul

Orders: order@signalwayantibody.com

Support: tech@signalwayantibody.com

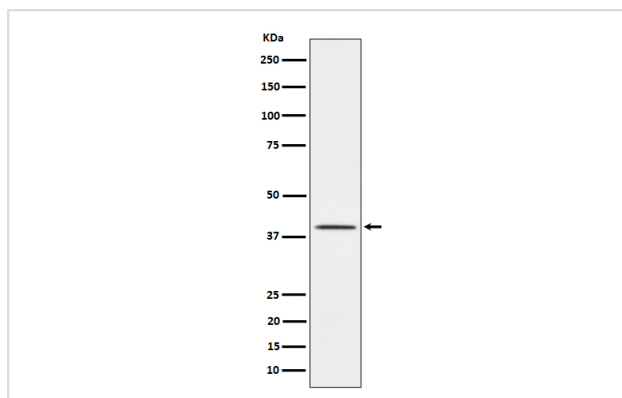
Description

Product Name	TTF1 Rabbit mAb
Host Species	Rabbit
Clonality	Monoclonal
Isotype	Rabbit IgG
Purification	Affinity-chromatography
Applications	WB IHC
Species Reactivity	Human Mouse Rat
Specificity	TTF1 Antibody detects endogenous levels of total TTF1
Immunogen Description	A synthesized peptide derived from human TTF1
Other Names	BCH; BHC; NK2; NKX2.1; NKX2A; TEBP; Thyroid nuclear factor 1; Tinman; TITF1; TTF1;
Accession No.	Uniprot:P43699
Uniprot	P43699
Formulation	Rabbit IgG in phosphate buffered saline , pH 7.4, 150mM NaCl, 0.02% sodium azide and 50% glycerol.
Storage	Store at +4°C short term. Store at -20°C long term. Avoid freeze / thaw cycle.

Application Details

WB 1:500~1:2000 IHC 1:50~1:200

Images



Western blot analysis of TTF1 expression in Rat lung cell lysate.

Product Description

Transcription factor that binds and activates the promoter of thyroid specific genes such as thyroglobulin, thyroperoxidase, and thyrotropin receptor.

Background

Transcription factor that binds and activates the promoter of thyroid specific genes such as thyroglobulin, thyroperoxidase, and thyrotropin receptor.

Note: This product is for in vitro research use only