

ITPA Rabbit mAb

Catalog No: #60078

Package Size: #60078-1 50ul #60078-2 100ul

Orders: order@signalwayantibody.com

Support: tech@signalwayantibody.com

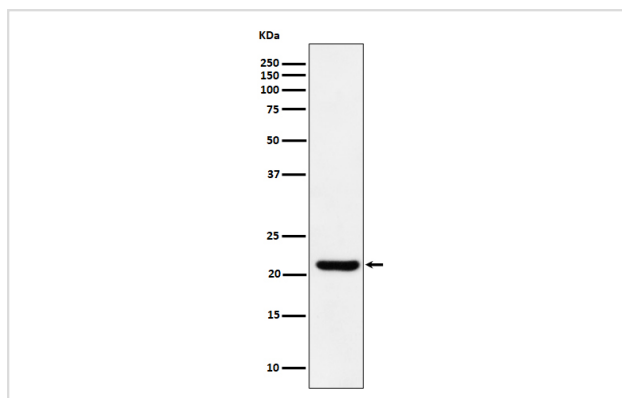
Description

Product Name	ITPA Rabbit mAb
Host Species	Rabbit
Clonality	Monoclonal
Isotype	Rabbit IgG
Purification	Affinity-chromatography
Applications	WB IHC
Species Reactivity	Human
Specificity	ITPA Antibody detects endogenous levels of total ITPA
Immunogen Description	A synthesized peptide derived from human ITPA
Other Names	Inosine triphosphatase; Itpa; ITPase; My049; NTPase;
Accession No.	Uniprot:Q9BY32
Uniprot	Q9BY32
Formulation	Rabbit IgG in phosphate buffered saline , pH 7.4, 150mM NaCl, 0.02% sodium azide and 50% glycerol.
Storage	Store at +4°C short term. Store at -20°C long term. Avoid freeze / thaw cycle.

Application Details

WB 1:500~1:2000 IHC 1:50~1:200

Images



Western blot analysis of ITPA expression in HepG2 cell lysate.

Product Description

Hydrolyzes ITP and dITP to their respective monophosphate derivatives.

Background

Hydrolyzes ITP and dITP to their respective monophosphate derivatives.

Note: This product is for in vitro research use only