

## TTF1 Rabbit mAb

Catalog No: #60079

Package Size: #60079-1 50ul #60079-2 100ul

Orders: order@signalwayantibody.com

Support: tech@signalwayantibody.com

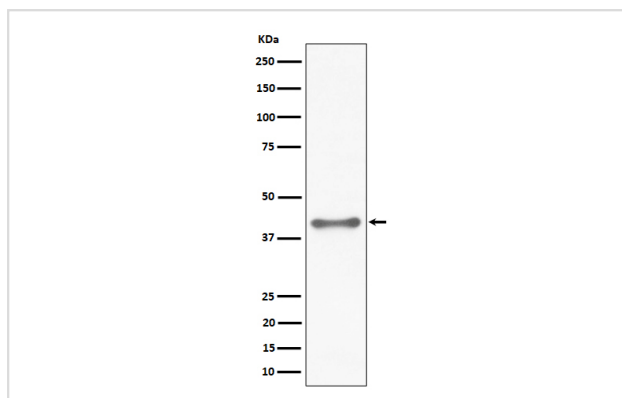
## Description

Product Name	TTF1 Rabbit mAb
Host Species	Rabbit
Clonality	Monoclonal
Isotype	Rabbit IgG
Purification	Affinity-chromatography
Applications	WB IHC
Species Reactivity	Human Mouse Rat
Specificity	TTF1 Antibody detects endogenous levels of total TTF1
Immunogen Description	A synthesized peptide derived from human TTF1
Other Names	BCH; BHC; NK2; NKX2.1; NKX2A; TEBP; Thyroid nuclear factor 1; Tinman; TITF1; TTF1;
Accession No.	Uniprot:P43699
Uniprot	P43699
Formulation	Rabbit IgG in phosphate buffered saline , pH 7.4, 150mM NaCl, 0.02% sodium azide and 50% glycerol.
Storage	Store at +4°C short term. Store at -20°C long term. Avoid freeze / thaw cycle.

## Application Details

WB 1:500~1:2000 IHC 1:50~1:200

## Images



Western blot analysis of TTF1 expression in HeLa cell lysate.

## Product Description

Transcription factor that binds and activates the promoter of thyroid specific genes such as thyroglobulin, thyroperoxidase, and thyrotropin receptor.

## Background

Transcription factor that binds and activates the promoter of thyroid specific genes such as thyroglobulin, thyroperoxidase, and thyrotropin receptor.

---

Note: This product is for in vitro research use only