

Spermine synthase Rabbit mAb

Catalog No: #60080

Package Size: #60080-1 50ul #60080-2 100ul

Orders: order@signalwayantibody.com

Support: tech@signalwayantibody.com

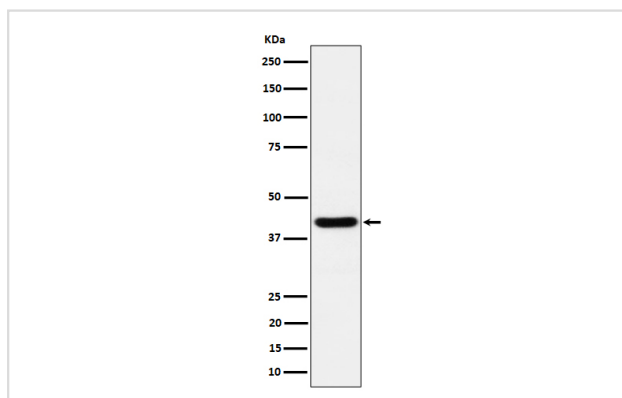
Description

Product Name	Spermine synthase Rabbit mAb
Host Species	Rabbit
Clonality	Monoclonal
Isotype	Rabbit IgG
Purification	Affinity-chromatography
Applications	WB ICC/IF
Species Reactivity	Human Mouse Rat
Specificity	Spermine synthase Antibody detects endogenous levels of total Spermine synthase
Immunogen Description	A synthesized peptide derived from human Spermine synthase
Other Names	MRSR; SMS; Spermine synthase; SPMSY; SpS; SRS;
Accession No.	Uniprot:P52788
Uniprot	P52788
Calculated MW	41kDa
Formulation	Rabbit IgG in phosphate buffered saline , pH 7.4, 150mM NaCl, 0.02% sodium azide and 50% glycerol.
Storage	Store at +4°C short term. Store at -20°C long term. Avoid freeze / thaw cycle.

Application Details

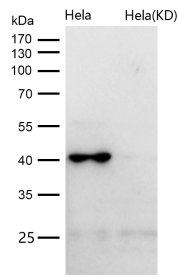
WB 1:500~1:2000 ICC/IF 1:50~1:200

Images



Western blot analysis of Spermine synthase expression in HeLa cell lysate.

All lanes use the Antibody at 1:1K dilution for 1 hour at room temperature.



Product Description

Required for normal viability, growth and fertility.

Background

Required for normal viability, growth and fertility.

Note: This product is for in vitro research use only