

SOD2 (acetyl K68) Rabbit mAb

Catalog No: #60082

Package Size: #60082-1 50ul #60082-2 100ul

Orders: order@signalwayantibody.com

Support: tech@signalwayantibody.com

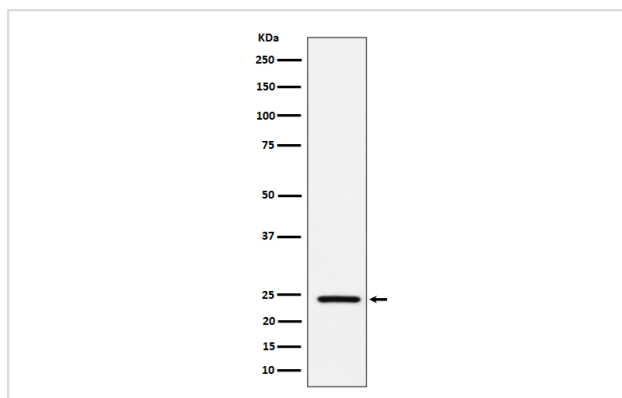
Description

Product Name	SOD2 (acetyl K68) Rabbit mAb
Host Species	Rabbit
Clonality	Monoclonal
Isotype	Rabbit IgG
Purification	Affinity-chromatography
Applications	WB IHC
Species Reactivity	Human Mouse Rat
Specificity	SOD2 (acetyl K68) Antibody detects endogenous levels of total SOD2 (acetyl K68)
Immunogen Description	A synthesized peptide derived from human SOD2 (acetyl K68)
Other Names	Indophenoloxidase B; IPOB; MNSOD; MVCD6; SOD2;
Accession No.	Uniprot:P04179
Uniprot	P04179
Formulation	Rabbit IgG in phosphate buffered saline , pH 7.4, 150mM NaCl, 0.02% sodium azide and 50% glycerol.
Storage	Store at +4°C short term. Store at -20°C long term. Avoid freeze / thaw cycle.

Application Details

WB 1:500~1:2000 IHC 1:50~1:200

Images



Western blot analysis of SOD2 (acetyl K68) expression in mouse heart cell lysate.

Product Description

Destroys superoxide anion radicals which are normally produced within the cells and which are toxic to biological systems.

Background

Destroys superoxide anion radicals which are normally produced within the cells and which are toxic to biological systems.

Note: This product is for in vitro research use only