

## Syntaxin 16 Rabbit mAb

Catalog No: #60083

Package Size: #60083-1 50ul #60083-2 100ul

Orders: [order@signalwayantibody.com](mailto:order@signalwayantibody.com)Support: [tech@signalwayantibody.com](mailto:tech@signalwayantibody.com)

## Description

Product Name	Syntaxin 16 Rabbit mAb
Host Species	Rabbit
Clonality	Monoclonal
Isotype	Rabbit IgG
Purification	Affinity-chromatography
Applications	WB IHC ICC/IF
Species Reactivity	Human Mouse Rat
Specificity	Syntaxin 16 Antibody detects endogenous levels of total Syntaxin 16
Immunogen Description	A synthesized peptide derived from human Syntaxin 16
Other Names	hsyn16; Stx16; Syn16;
Accession No.	Uniprot:O14662
Uniprot	O14662
Calculated MW	37kDa
Formulation	Rabbit IgG in phosphate buffered saline , pH 7.4, 150mM NaCl, 0.02% sodium azide and 50% glycerol.
Storage	Store at +4°C short term. Store at -20°C long term. Avoid freeze / thaw cycle.

## Application Details

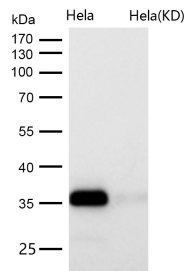
WB 1:500~1:2000 IHC 1:50~1:200 ICC/IF 1:50~1:200

## Images



Western blot analysis of Syntaxin 16 expression in HeLa cell lysate.

All lanes use the Antibody at 1:1K dilution for 1 hour at room temperature.



## Product Description

SNARE involved in vesicular transport from the late endosomes to the trans-Golgi network.

## Background

SNARE involved in vesicular transport from the late endosomes to the trans-Golgi network.

Note: This product is for in vitro research use only