

## ADRA1A Rabbit mAb

Catalog No: #60085

Package Size: #60085-1 50ul #60085-2 100ul

Orders: order@signalwayantibody.com

Support: tech@signalwayantibody.com

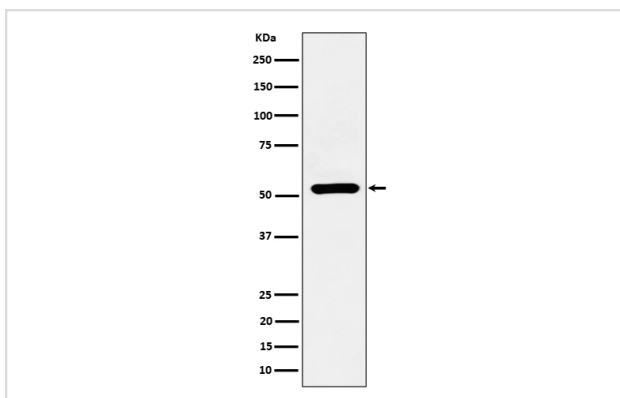
## Description

Product Name	ADRA1A Rabbit mAb
Host Species	Rabbit
Clonality	Monoclonal
Isotype	Rabbit IgG
Purification	Affinity-chromatography
Applications	WB ICC/IF FC
Species Reactivity	Human Mouse Rat
Specificity	ADRA1A Antibody detects endogenous levels of total ADRA1A
Immunogen Description	A synthesized peptide derived from human ADRA1A
Other Names	ADRA1A; Adra1c; ADRA1L1; ALPHA1AAR;
Accession No.	Uniprot:P35348
Uniprot	P35348
Formulation	Rabbit IgG in phosphate buffered saline , pH 7.4, 150mM NaCl, 0.02% sodium azide and 50% glycerol.
Storage	Store at +4°C short term. Store at -20°C long term. Avoid freeze / thaw cycle.

## Application Details

WB 1:500~1:2000 ICC/IF 1:50~1:200 FC 1:50

## Images



Western blot analysis of ADRA1A expression in HepG2 cell lysate.

## Product Description

This alpha-adrenergic receptor mediates its action by association with G proteins that activate a phosphatidylinositol-calcium second messenger system. Its effect is mediated by G(q) and G(11) proteins.

## Background

---

This alpha-adrenergic receptor mediates its action by association with G proteins that activate a phosphatidylinositol-calcium second messenger system. Its effect is mediated by G(q) and G(11) proteins.

---

Note: This product is for in vitro research use only