

Calumenin Rabbit mAb

Catalog No: #60086

Package Size: #60086-1 50ul #60086-2 100ul

Orders: order@signalwayantibody.comSupport: tech@signalwayantibody.com

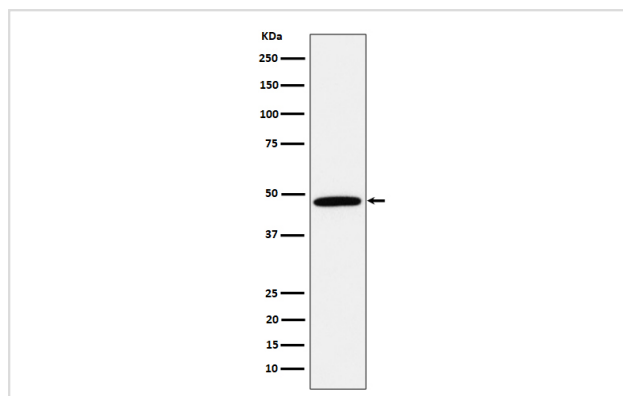
Description

Product Name	Calumenin Rabbit mAb
Host Species	Rabbit
Clonality	Monoclonal
Isotype	Rabbit IgG
Purification	Affinity-chromatography
Applications	WB IHC
Species Reactivity	Human Mouse Rat
Specificity	Calumenin Antibody detects endogenous levels of total Calumenin
Immunogen Description	A synthesized peptide derived from human Calumenin
Other Names	CALU; Calumenin 1; Calumenin 2; Calumenin; Crocalbin;
Accession No.	Uniprot:O43852
Uniprot	O43852
Formulation	Rabbit IgG in phosphate buffered saline , pH 7.4, 150mM NaCl, 0.02% sodium azide and 50% glycerol.
Storage	Store at +4°C short term. Store at -20°C long term. Avoid freeze / thaw cycle.

Application Details

WB 1:500~1:2000 IHC 1:50~1:200

Images



Western blot analysis of Calumenin expression in 293T cell lysate.

Product Description

Involved in regulation of vitamin K-dependent carboxylation of multiple amino-terminal glutamate residues. Seems to inhibit gamma-carboxylase GGCX. Binds 7 calcium ions with a low affinity.

Background

Involved in regulation of vitamin K-dependent carboxylation of multiple amino-terminal glutamate residues. Seems to inhibit gamma-carboxylase GGCX. Binds 7 calcium ions with a low affinity.

Note: This product is for in vitro research use only