

S100 alpha Rabbit mAb

Catalog No: #60088

Package Size: #60088-1 50ul #60088-2 100ul

Orders: order@signalwayantibody.com

Support: tech@signalwayantibody.com

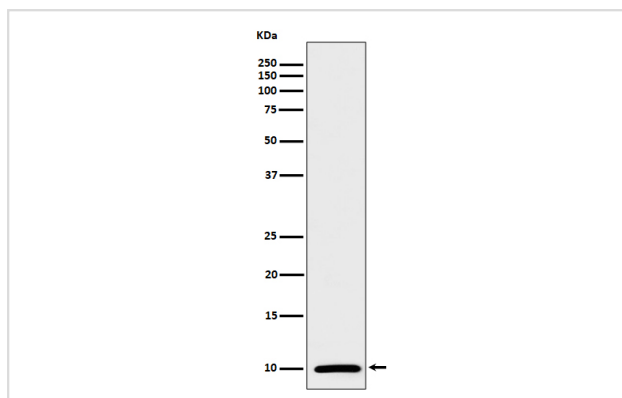
Description

Product Name	S100 alpha Rabbit mAb
Host Species	Rabbit
Clonality	Monoclonal
Isotype	Rabbit IgG
Purification	Affinity-chromatography
Applications	WB IHC
Species Reactivity	Human Mouse Rat
Specificity	S100 alpha Antibody detects endogenous levels of total S100 alpha
Immunogen Description	A synthesized peptide derived from human S100 alpha
Other Names	Bpb; NEF; S100 alpha; S100; S100 Beta Chain; S100A; s100a1;
Accession No.	Uniprot:P23297
Uniprot	P23297
Formulation	Rabbit IgG in phosphate buffered saline , pH 7.4, 150mM NaCl, 0.02% sodium azide and 50% glycerol.
Storage	Store at +4°C short term. Store at -20°C long term. Avoid freeze / thaw cycle.

Application Details

WB 1:500~1:2000 IHC 1:50~1:200

Images



Western blot analysis of S100 alpha expression in mouse heart lysate.

Product Description

Weakly binds calcium but binds zinc very tightly-distinct binding sites with different affinities exist for both ions on each monomer. Physiological concentrations of potassium ion antagonize the binding of both divalent cations, especially affecting high-affinity calcium-binding sites.

Background

Weakly binds calcium but binds zinc very tightly-distinct binding sites with different affinities exist for both ions on each monomer. Physiological concentrations of potassium ion antagonize the binding of both divalent cations, especially affecting high-affinity calcium-binding sites.

Note: This product is for in vitro research use only