

RSK2 / RPS6KA3 Rabbit mAb

Catalog No: #60091

Package Size: #60091-1 50ul #60091-2 100ul

Orders: order@signalwayantibody.com

Support: tech@signalwayantibody.com

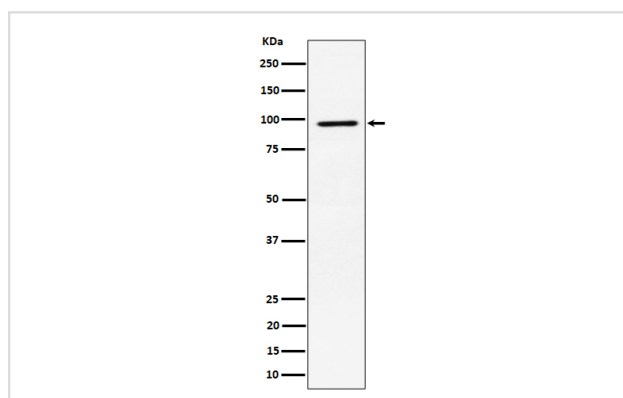
Description

Product Name	RSK2 / RPS6KA3 Rabbit mAb
Host Species	Rabbit
Clonality	Monoclonal
Isotype	Rabbit IgG
Purification	Affinity-chromatography
Applications	WB IHC FC
Species Reactivity	Human Mouse Rat
Specificity	RSK2 / RPS6KA3 Antibody detects endogenous levels of total RSK2 / RPS6KA3
Immunogen Description	A synthesized peptide derived from human RSK2 / RPS6KA3
Other Names	CLS; HU2; HU3; Insulin stimulated protein kinase 1; ISPK1; MAP kinase activated protein kinase 1b; MAPKAP kinase 1b; MAPKAPK 1b; MAPKAPK1B; MRX19; p90 RSK2; p90 RSK3; p90RSK3; pp90RSK2; Ribosomal protein S6 kinase alpha 3; Ribosomal protein s6 kinase ii alpha 2; Ribosomal S6 kinase 2; Rps6ka3; RSK; RSK2; S6 kinase 2; S6K alpha3;
Accession No.	Uniprot:P51812
Uniprot	P51812
Formulation	Rabbit IgG in phosphate buffered saline , pH 7.4, 150mM NaCl, 0.02% sodium azide and 50% glycerol.
Storage	Store at +4°C short term. Store at -20°C long term. Avoid freeze / thaw cycle.

Application Details

WB 1:500~1:2000 IHC 1:50~1:200 FC 1:50

Images



Western blot analysis of RSK2 / RPS6KA3 expression in MCF7 cell lysate.

Product Description

Serine/threonine kinase that may play a role in mediating the growth-factor and stress induced activation of the transcription factor CREB.

Background

Serine/threonine kinase that may play a role in mediating the growth-factor and stress induced activation of the transcription factor CREB.

Note: This product is for in vitro research use only