

## GCLM Rabbit mAb

Catalog No: #60095

Package Size: #60095-1 50ul #60095-2 100ul

Orders: order@signalwayantibody.com

Support: tech@signalwayantibody.com

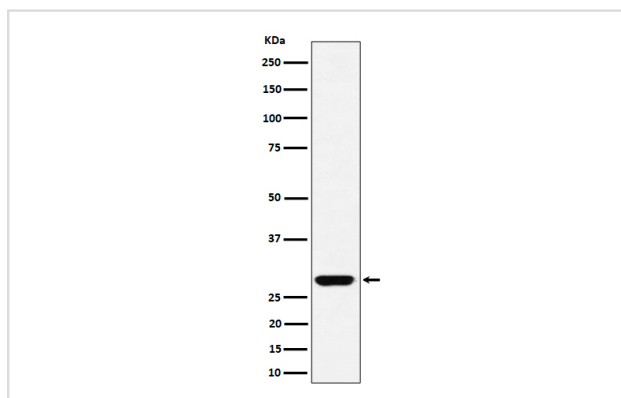
## Description

Product Name	GCLM Rabbit mAb
Host Species	Rabbit
Clonality	Monoclonal
Isotype	Rabbit IgG
Purification	Affinity-chromatography
Applications	WB IHC IP
Species Reactivity	Human Mouse Rat
Specificity	GCLM Antibody detects endogenous levels of total GCLM
Immunogen Description	A synthesized peptide derived from human GCLM
Other Names	GCLM; GCS light chain; GLCLR;
Accession No.	Uniprot:P48507
Uniprot	P48507
Calculated MW	28kDa
Formulation	Rabbit IgG in phosphate buffered saline , pH 7.4, 150mM NaCl, 0.02% sodium azide and 50% glycerol.
Storage	Store at +4°C short term. Store at -20°C long term. Avoid freeze / thaw cycle.

## Application Details

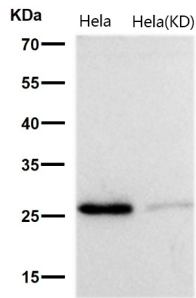
WB 1:500~1:2000 IHC 1:50~1:200 IP 1:50

## Images



Western blot analysis of GCLM expression in HeLa cell lysate.

All lanes use the Antibody at 1:1K dilution for 1 hour at room temperature.



## Product Description

This protein is involved in step 1 of the subpathway that synthesizes glutathione from L-cysteine and L-glutamate. This subpathway is part of the pathway glutathione biosynthesis, which is itself part of Sulfur metabolism.

## Background

This protein is involved in step 1 of the subpathway that synthesizes glutathione from L-cysteine and L-glutamate. This subpathway is part of the pathway glutathione biosynthesis, which is itself part of Sulfur metabolism.

Note: This product is for in vitro research use only