

Cytokeratin 19 Rabbit mAb

Catalog No: #60097

Package Size: #60097-1 50ul #60097-2 100ul

Orders: order@signalwayantibody.comSupport: tech@signalwayantibody.com

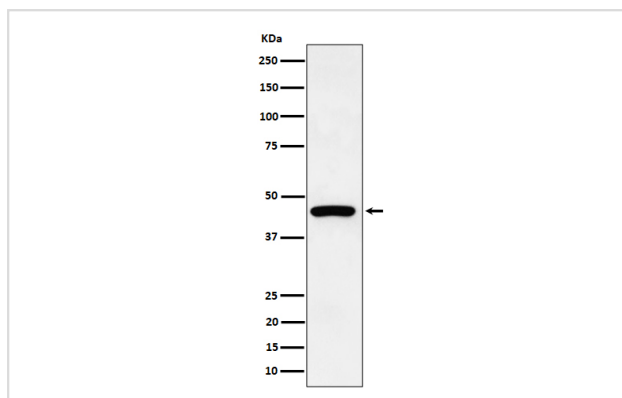
Description

Product Name	Cytokeratin 19 Rabbit mAb
Host Species	Rabbit
Clonality	Monoclonal
Isotype	Rabbit IgG
Purification	Affinity-chromatography
Applications	WB IHC ICC/IF IP FC
Species Reactivity	Human
Specificity	Cytokeratin 19 Antibody detects endogenous levels of total Cytokeratin 19
Immunogen Description	A synthesized peptide derived from human Cytokeratin 19
Other Names	CK19; Cytokeratin 19; K19; K1CS; Keratin 19; Keratin type I 40kD; Keratin type I cytoskeletal 19; KRT19;
Accession No.	Uniprot:P08727
Uniprot	P08727
Formulation	Rabbit IgG in phosphate buffered saline , pH 7.4, 150mM NaCl, 0.02% sodium azide and 50% glycerol.
Storage	Store at +4°C short term. Store at -20°C long term. Avoid freeze / thaw cycle.

Application Details

WB 1:500~1:2000 IHC 1:50~1:200 ICC/IF 1:50~1:200 IP 1:50 FC 1:50

Images



Western blot analysis of Cytokeratin 19 expression in HepG2 cell lysate.

Product Description

Involved in the organization of myofibers. Together with KRT8, helps to link the contractile apparatus to dystrophin at the costameres of striated muscle.

Background

Involved in the organization of myofibers. Together with KRT8, helps to link the contractile apparatus to dystrophin at the costameres of striated muscle.

Note: This product is for in vitro research use only