

## Epsin 1 Rabbit mAb

Catalog No: #60099

Package Size: #60099-1 50ul #60099-2 100ul

Orders: order@signalwayantibody.com

Support: tech@signalwayantibody.com

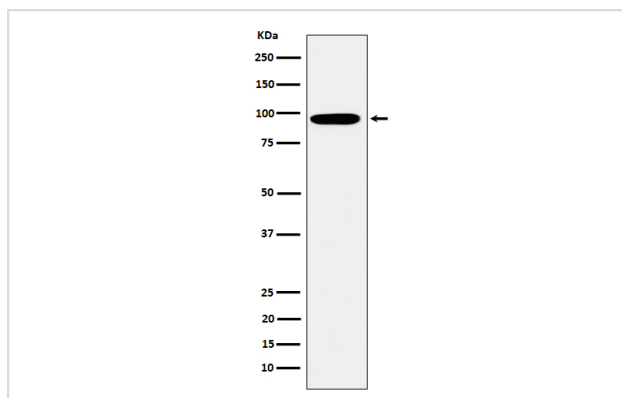
## Description

Product Name	Epsin 1 Rabbit mAb
Host Species	Rabbit
Clonality	Monoclonal
Isotype	Rabbit IgG
Purification	Affinity-chromatography
Applications	WB ICC/IF
Species Reactivity	Human Mouse Rat
Specificity	Epsin 1 Antibody detects endogenous levels of total Epsin 1
Immunogen Description	A synthesized peptide derived from human Epsin 1
Other Names	EH domain binding mitotic phosphoprotein; Epn1 ;EPS 15 interacting protein 1; Epsin 1;
Accession No.	Uniprot:Q9Y6I3
Uniprot	Q9Y6I3
Formulation	Rabbit IgG in phosphate buffered saline , pH 7.4, 150mM NaCl, 0.02% sodium azide and 50% glycerol.
Storage	Store at +4°C short term. Store at -20°C long term. Avoid freeze / thaw cycle.

## Application Details

WB 1:500~1:2000 ICC/IF 1:50~1:200

## Images



Western blot analysis of Epsin 1 expression in K562 cell lysate.

## Product Description

Binds to membranes enriched in phosphatidylinositol 4,5-bisphosphate (PtdIns(4,5)P<sub>2</sub>). Modifies membrane curvature and facilitates the formation of clathrin-coated invaginations (By similarity). Regulates receptor-mediated endocytosis.

## Background

---

Binds to membranes enriched in phosphatidylinositol 4,5-bisphosphate (PtdIns(4,5)P<sub>2</sub>). Modifies membrane curvature and facilitates the formation of clathrin-coated invaginations (By similarity). Regulates receptor-mediated endocytosis.

---

Note: This product is for in vitro research use only