

UFM1 Rabbit mAb

Catalog No: #60101

Package Size: #60101-1 50ul #60101-2 100ul

Orders: order@signalwayantibody.com

Support: tech@signalwayantibody.com

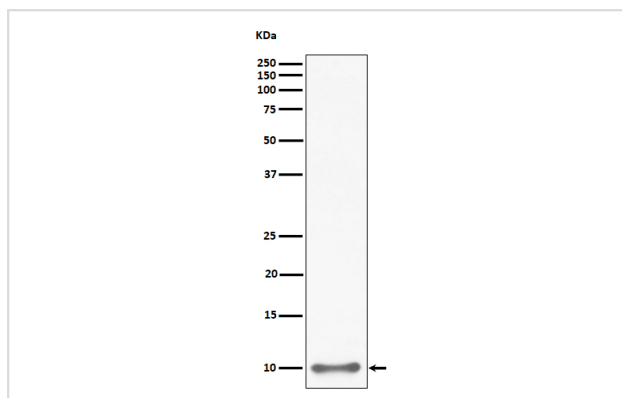
Description

Product Name	UFM1 Rabbit mAb
Host Species	Rabbit
Clonality	Monoclonal
Isotype	Rabbit IgG
Purification	Affinity-chromatography
Applications	WB IHC IP
Species Reactivity	Human Mouse Rat
Specificity	UFM1 Antibody detects endogenous levels of total UFM1
Immunogen Description	A synthesized peptide derived from human UFM1
Other Names	BM002; Chromosome 13 open reading frame 20; Ubiquitin-fold modifier 1; UFM1;
Accession No.	Uniprot:P61960
Uniprot	P61960
Formulation	Rabbit IgG in phosphate buffered saline , pH 7.4, 150mM NaCl, 0.02% sodium azide and 50% glycerol.
Storage	Store at +4°C short term. Store at -20°C long term. Avoid freeze / thaw cycle.

Application Details

WB 1:500~1:2000 IHC 1:50~1:200 IP 1:50

Images



Western blot analysis of UFM1 expression in HepG2 cell lysate.

Product Description

Ubiquitin-like modifier protein which binds to a number of target proteins, such as DDRGK1.

Background

Ubiquitin-like modifier protein which binds to a number of target proteins, such as DDRGK1.

Note: This product is for in vitro research use only