

UBA52 Rabbit mAb

Catalog No: #60102

Package Size: #60102-1 50ul #60102-2 100ul

Orders: order@signalwayantibody.com

Support: tech@signalwayantibody.com

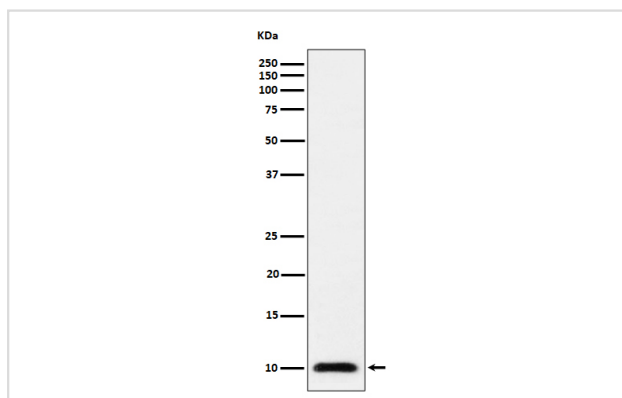
Description

Product Name	UBA52 Rabbit mAb
Host Species	Rabbit
Clonality	Monoclonal
Isotype	Rabbit IgG
Purification	Affinity-chromatography
Applications	WB IHC ICC/IF FC
Species Reactivity	Human Mouse Rat
Specificity	UBA52 Antibody detects endogenous levels of total UBA52
Immunogen Description	A synthesized peptide derived from human UBA52
Other Names	60S ribosomal protein L40; CEP52; HUBCEP52; RPL40; UBA 52; Ubiquitin 52 amino acid fusion protein; Ubiquitin 60S ribosomal protein L40; Ubiquitin carboxyl extension protein 52; Ubiquitin CEP52;
Accession No.	Uniprot:P62987
Uniprot	P62987
Formulation	Rabbit IgG in phosphate buffered saline , pH 7.4, 150mM NaCl, 0.02% sodium azide and 50% glycerol.
Storage	Store at +4°C short term. Store at -20°C long term. Avoid freeze / thaw cycle.

Application Details

WB 1:500~1:2000 IHC 1:50~1:200 ICC/IF 1:50~1:200 FC 1:50

Images



Western blot analysis of UBA52 expression in 293T cell lysate.

Product Description

UBA52 is a fusion protein consisting of ubiquitin at the N terminus and ribosomal protein L40 at the C terminus, a C-terminal extension protein (CEP). Multiple processed pseudogenes derived from this gene are present in the genome.

Background

UBA52 is a fusion protein consisting of ubiquitin at the N terminus and ribosomal protein L40 at the C terminus, a C-terminal extension protein (CEP). Multiple processed pseudogenes derived from this gene are present in the genome.

Note: This product is for in vitro research use only