

GRK6 Rabbit mAb

Catalog No: #60105

Package Size: #60105-1 50ul #60105-2 100ul

Orders: order@signalwayantibody.com

Support: tech@signalwayantibody.com

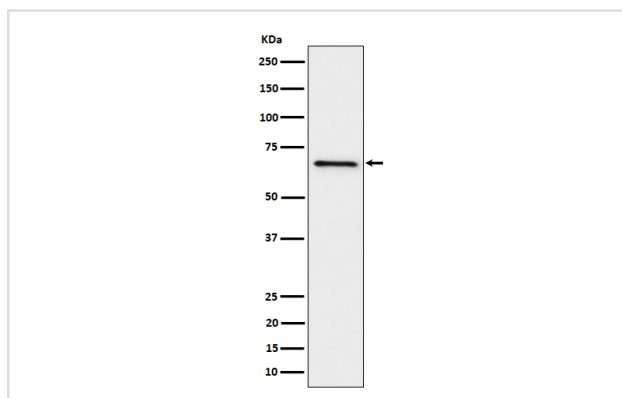
Description

Product Name	GRK6 Rabbit mAb
Host Species	Rabbit
Clonality	Monoclonal
Isotype	Rabbit IgG
Purification	Affinity-chromatography
Applications	WB
Species Reactivity	Human Mouse
Specificity	GRK6 Antibody detects endogenous levels of total GRK6
Immunogen Description	A synthesized peptide derived from human GRK6
Other Names	G protein coupled receptor kinase 6; G protein coupled receptor kinase GRK6; G protein-coupled receptor kinase 6; Gprk6; Grk6;
Accession No.	Uniprot:P43250
Uniprot	P43250
Formulation	Rabbit IgG in phosphate buffered saline , pH 7.4, 150mM NaCl, 0.02% sodium azide and 50% glycerol.
Storage	Store at +4°C short term. Store at -20°C long term. Avoid freeze / thaw cycle.

Application Details

WB 1:500~1:2000

Images



Western blot analysis of GRK6 expression in Ramos cell lysate.

Product Description

Specifically phosphorylates the activated forms of G protein-coupled receptors.

Background

Specifically phosphorylates the activated forms of G protein-coupled receptors.

Note: This product is for in vitro research use only