

Cystatin B Rabbit mAb

Catalog No: #60111

Package Size: #60111-1 50ul #60111-2 100ul

Orders: order@signalwayantibody.com

Support: tech@signalwayantibody.com

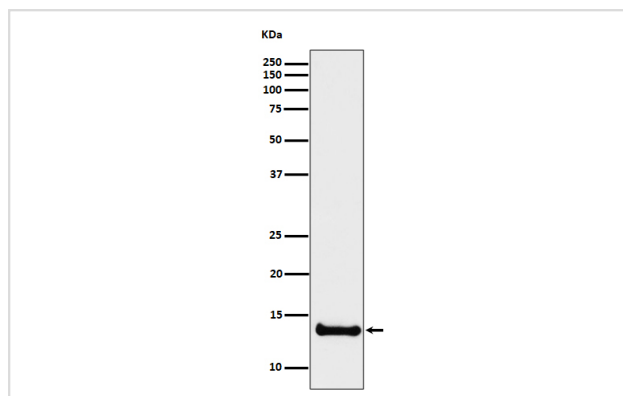
Description

Product Name	Cystatin B Rabbit mAb
Host Species	Rabbit
Clonality	Monoclonal
Isotype	Rabbit IgG
Purification	Affinity-chromatography
Applications	WB IHC
Species Reactivity	Human Rat
Specificity	Cystatin B Antibody detects endogenous levels of total Cystatin B
Immunogen Description	A synthesized peptide derived from human Cystatin B
Other Names	CHROW21; CST6; CSTB; Cystatin B (stefin B); CYTB EPM1; EPM1A; PME; STFB; ULD;
Accession No.	Uniprot:P04080
Uniprot	P04080
Formulation	Rabbit IgG in phosphate buffered saline , pH 7.4, 150mM NaCl, 0.02% sodium azide and 50% glycerol.
Storage	Store at +4°C short term. Store at -20°C long term. Avoid freeze / thaw cycle.

Application Details

WB 1:500~1:2000 IHC 1:50~1:200

Images



Western blot analysis of Cystatin B expression in U87-MG cell lysate.

Product Description

This is an intracellular thiol proteinase inhibitor. Tightly binding reversible inhibitor of cathepsins L, H and B.

Background

This is an intracellular thiol proteinase inhibitor. Tightly binding reversible inhibitor of cathepsins L, H and B.

Note: This product is for in vitro research use only