

AMSH Rabbit mAb

Catalog No: #60115

Package Size: #60115-1 50ul #60115-2 100ul

Orders: order@signalwayantibody.com

Support: tech@signalwayantibody.com

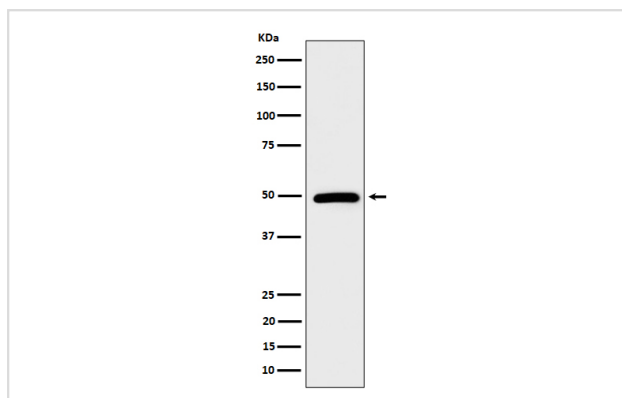
Description

Product Name	AMSH Rabbit mAb
Host Species	Rabbit
Clonality	Monoclonal
Isotype	Rabbit IgG
Purification	Affinity-chromatography
Applications	WB
Species Reactivity	Human
Specificity	AMSH Antibody detects endogenous levels of total AMSH
Immunogen Description	A synthesized peptide derived from human AMSH
Other Names	AMSH; MICC/IFAP; STAM binding protein; Stampb;
Accession No.	Uniprot:O95630
Uniprot	O95630
Formulation	Rabbit IgG in phosphate buffered saline , pH 7.4, 150mM NaCl, 0.02% sodium azide and 50% glycerol.
Storage	Store at +4°C short term. Store at -20°C long term. Avoid freeze / thaw cycle.

Application Details

WB 1:500~1:2000

Images



Western blot analysis of AMSH expression in HeLa cell lysate.

Product Description

Zinc metalloprotease that specifically cleaves 'Lys-63'-linked polyubiquitin chains. Does not cleave 'Lys-48'-linked polyubiquitin chains (By similarity). Functions at the endosome and is able to oppose the ubiquitin-dependent sorting of receptors to lysosomes.

Background

Zinc metalloprotease that specifically cleaves 'Lys-63'-linked polyubiquitin chains. Does not cleave 'Lys-48'-linked polyubiquitin chains (By similarity). Functions at the endosome and is able to oppose the ubiquitin-dependent sorting of receptors to lysosomes.

Note: This product is for in vitro research use only