

TRAPPC2 Rabbit mAb

Catalog No: #60116

Package Size: #60116-1 50ul #60116-2 100ul

Orders: order@signalwayantibody.comSupport: tech@signalwayantibody.com

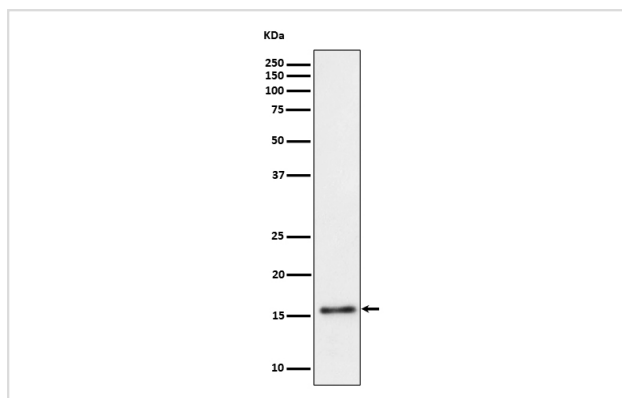
Description

Product Name	TRAPPC2 Rabbit mAb
Host Species	Rabbit
Clonality	Monoclonal
Isotype	Rabbit IgG
Purification	Affinity-chromatography
Applications	WB IHC ICC/IF
Species Reactivity	Human Mouse Rat
Specificity	TRAPPC2 Antibody detects endogenous levels of total TRAPPC2
Immunogen Description	A synthesized peptide derived from human TRAPPC2
Other Names	MIP2A; SEDL; Sedlin; SEDLP; SEDT; Trafficking protein particle complex 2; TRAPPC2P1; TRS20; ZNF547L;
Accession No.	Uniprot:P0DI81
Uniprot	P0DI81
Formulation	Rabbit IgG in phosphate buffered saline , pH 7.4, 150mM NaCl, 0.02% sodium azide and 50% glycerol.
Storage	Store at +4°C short term. Store at -20°C long term. Avoid freeze / thaw cycle.

Application Details

WB 1:500~1:2000 IHC 1:50~1:200 ICC/IF 1:50~1:200

Images



Western blot analysis of TRAPPC2 expression in Raji cell lysate.

Product Description

Prevents transcriptional repression and induction of cell death by ENO1 (By similarity). May play a role in vesicular transport from endoplasmic reticulum to Golgi.

Background

Prevents transcriptional repression and induction of cell death by ENO1 (By similarity). May play a role in vesicular transport from endoplasmic reticulum to Golgi.

Note: This product is for in vitro research use only