

Nodal Rabbit mAb

Catalog No: #60120

Package Size: #60120-1 50ul #60120-2 100ul

Orders: order@signalwayantibody.com

Support: tech@signalwayantibody.com

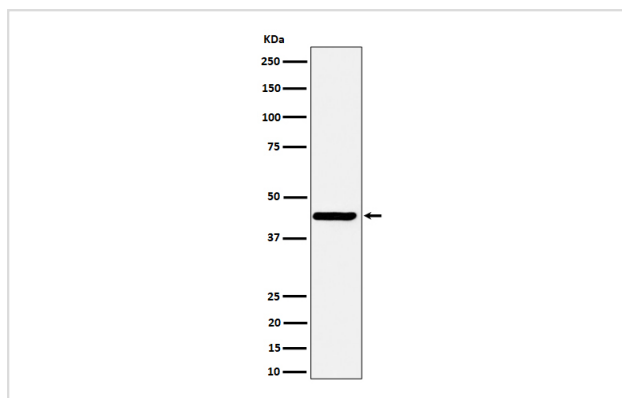
Description

| | |
|-----------------------|--|
| Product Name | Nodal Rabbit mAb |
| Host Species | Rabbit |
| Clonality | Monoclonal |
| Isotype | Rabbit IgG |
| Purification | Affinity-chromatography |
| Applications | WB |
| Species Reactivity | Human |
| Specificity | Nodal Antibody detects endogenous levels of total Nodal |
| Immunogen Description | A synthesized peptide derived from human Nodal |
| Other Names | HTX5; Nodal; |
| Accession No. | Uniprot:Q96S42 |
| Uniprot | Q96S42 |
| Formulation | Rabbit IgG in phosphate buffered saline , pH 7.4, 150mM NaCl, 0.02% sodium azide and 50% glycerol. |
| Storage | Store at +4°C short term. Store at -20°C long term. Avoid freeze / thaw cycle. |

Application Details

WB 1:500~1:2000

Images



Western blot analysis of Nodal expression in SH-SY5Y cell lysate.

Product Description

Essential for mesoderm formation and axial patterning during embryonic development.

Background

Essential for mesoderm formation and axial patterning during embryonic development.

Note: This product is for in vitro research use only