

NAT1 Rabbit mAb

Catalog No: #60122

Package Size: #60122-1 50ul #60122-2 100ul

Orders: order@signalwayantibody.com

Support: tech@signalwayantibody.com

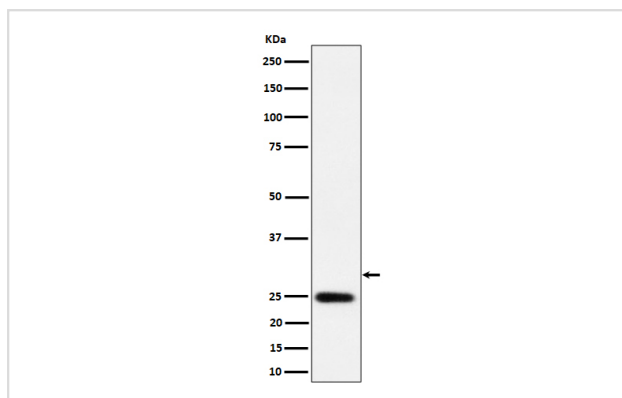
Description

Product Name	NAT1 Rabbit mAb
Host Species	Rabbit
Clonality	Monoclonal
Isotype	Rabbit IgG
Purification	Affinity-chromatography
Applications	WB ICC/IF FC
Species Reactivity	Human
Specificity	NAT1 Antibody detects endogenous levels of total NAT1
Immunogen Description	A synthesized peptide derived from human NAT1
Other Names	AAC1; Arylamide acetylase 1; mNAT; N acetyltransferase type 1; nat1;
Accession No.	Uniprot:P18440
Uniprot	P18440
Formulation	Rabbit IgG in phosphate buffered saline , pH 7.4, 150mM NaCl, 0.02% sodium azide and 50% glycerol.
Storage	Store at +4°C short term. Store at -20°C long term. Avoid freeze / thaw cycle.

Application Details

WB 1:500~1:2000 ICC/IF 1:50~1:200 FC 1:50

Images



Western blot analysis of NAT1 expression in LnCaP cell lysate.

Product Description

Participates in the detoxification of a plethora of hydrazine and arylamine drugs. Catalyzes the N- or O-acetylation of various arylamine and heterocyclic amine substrates and is able to bioactivate several known carcinogens.

Background

Participates in the detoxification of a plethora of hydrazine and arylamine drugs. Catalyzes the N- or O-acetylation of various arylamine and heterocyclic amine substrates and is able to bioactivate several known carcinogens.

Note: This product is for in vitro research use only