

MPP1 Rabbit mAb

Catalog No: #60124

Package Size: #60124-1 50ul #60124-2 100ul

Orders: order@signalwayantibody.com

Support: tech@signalwayantibody.com

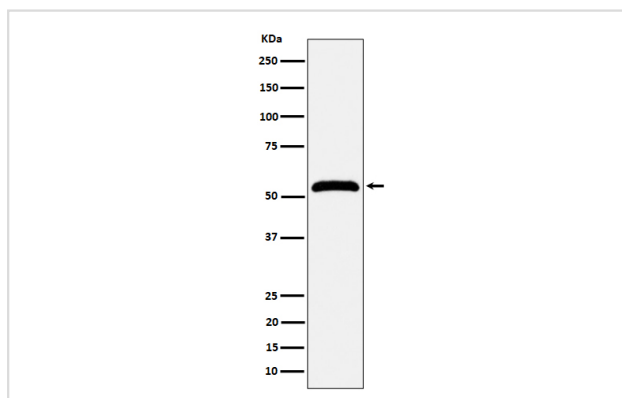
Description

Product Name	MPP1 Rabbit mAb
Host Species	Rabbit
Clonality	Monoclonal
Isotype	Rabbit IgG
Purification	Affinity-chromatography
Applications	WB
Species Reactivity	Human
Specificity	MPP1 Antibody detects endogenous levels of total MPP1
Immunogen Description	A synthesized peptide derived from human MPP1
Other Names	AAG12; DXS552; DXS552E; EMP55; Membrane protein palmitoylated 1; MPP1; MRG1; p55; palmitoylated 1; PEMP;
Accession No.	Uniprot:Q00013
Uniprot	Q00013
Formulation	Rabbit IgG in phosphate buffered saline , pH 7.4, 150mM NaCl, 0.02% sodium azide and 50% glycerol.
Storage	Store at +4°C short term. Store at -20°C long term. Avoid freeze / thaw cycle.

Application Details

WB 1:500~1:2000

Images



Western blot analysis of MPP1 expression in Jurkat cell lysate.

Product Description

Essential regulator of neutrophil polarity. Regulates neutrophil polarization by regulating AKT1 phosphorylation through a mechanism that is independent of PIK3CG activity.

Background

Essential regulator of neutrophil polarity. Regulates neutrophil polarization by regulating AKT1 phosphorylation through a mechanism that is independent of PIK3CG activity.

Note: This product is for in vitro research use only