

USF1 Rabbit mAb

Catalog No: #60126

Package Size: #60126-1 50ul #60126-2 100ul

Orders: order@signalwayantibody.com

Support: tech@signalwayantibody.com

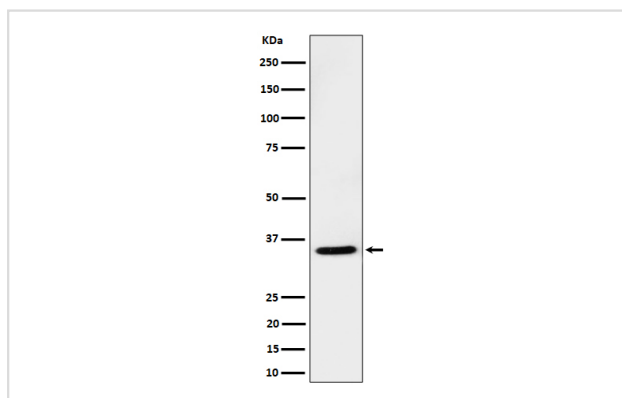
Description

Product Name	USF1 Rabbit mAb
Host Species	Rabbit
Clonality	Monoclonal
Isotype	Rabbit IgG
Purification	Affinity-chromatography
Applications	WB
Species Reactivity	Human Mouse Rat
Specificity	USF1 Antibody detects endogenous levels of total USF1
Immunogen Description	A synthesized peptide derived from human USF1
Other Names	bHLHb11; FCHL; FCHL1; HYPLIP1; Major late transcription factor 1; MLTF; MLTFI; UEF; Upstream stimulatory factor 1; USF;
Accession No.	Uniprot:P22415
Uniprot	P22415
Formulation	Rabbit IgG in phosphate buffered saline , pH 7.4, 150mM NaCl, 0.02% sodium azide and 50% glycerol.
Storage	Store at +4°C short term. Store at -20°C long term. Avoid freeze / thaw cycle.

Application Details

WB 1:500~1:2000

Images



Western blot analysis of USF1 expression in Jurkat cell lysate.

Product Description

Transcription factor that binds to a symmetrical DNA sequence (E-boxes) (5'-CACGTG-3') that is found in a variety of viral and cellular promoters.

Background

Transcription factor that binds to a symmetrical DNA sequence (E-boxes) (5'-CACGTG-3') that is found in a variety of viral and cellular promoters.

Note: This product is for in vitro research use only