

ING1 Rabbit mAb

Catalog No: #60127

Package Size: #60127-1 50ul #60127-2 100ul

Orders: order@signalwayantibody.com

Support: tech@signalwayantibody.com

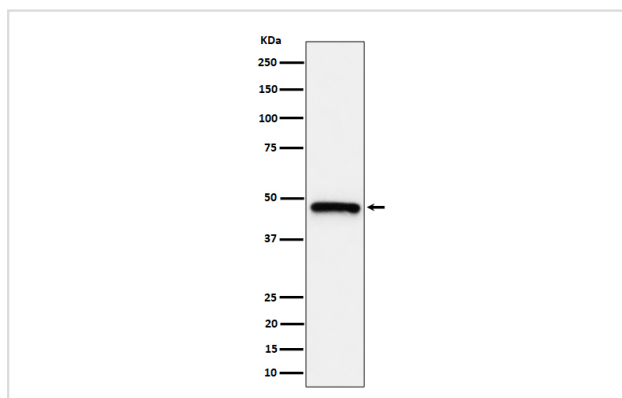
Description

Product Name	ING1 Rabbit mAb
Host Species	Rabbit
Clonality	Monoclonal
Isotype	Rabbit IgG
Purification	Affinity-chromatography
Applications	WB
Species Reactivity	Human Mouse Rat
Specificity	ING1 Antibody detects endogenous levels of total ING1
Immunogen Description	A synthesized peptide derived from human ING1
Other Names	Growth inhibitor ING1; Ing1; Inhibitor of growth 1; mING1h; p24ING1c; p33; p33ING1; p33ING1b; p33ING1c; p37Ing1b; p47; p47ING1a; Tumor suppressor ING1;
Accession No.	Uniprot:Q9UK53
Uniprot	Q9UK53
Formulation	Rabbit IgG in phosphate buffered saline , pH 7.4, 150mM NaCl, 0.02% sodium azide and 50% glycerol.
Storage	Store at +4°C short term. Store at -20°C long term. Avoid freeze / thaw cycle.

Application Details

WB 1:500~1:2000

Images



Western blot analysis of ING1 expression in HeLa cell lysate.

Product Description

Cooperates with p53/TP53 in the negative regulatory pathway of cell growth by modulating p53-dependent transcriptional activation. Implicated as a tumor suppressor gene.

Background

Cooperates with p53/TP53 in the negative regulatory pathway of cell growth by modulating p53-dependent transcriptional activation. Implicated as a tumor suppressor gene.

Note: This product is for in vitro research use only