

RASSF2 Rabbit mAb

Catalog No: #60128

Package Size: #60128-1 50ul #60128-2 100ul

Orders: order@signalwayantibody.com

Support: tech@signalwayantibody.com

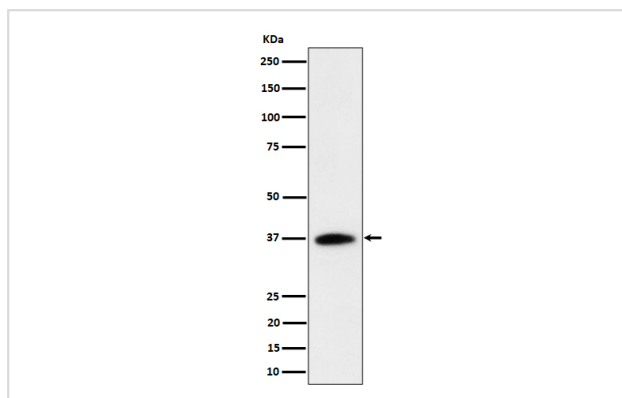
Description

Product Name	RASSF2 Rabbit mAb
Host Species	Rabbit
Clonality	Monoclonal
Isotype	Rabbit IgG
Purification	Affinity-chromatography
Applications	WB
Species Reactivity	Human
Specificity	RASSF2 Antibody detects endogenous levels of total RASSF2
Immunogen Description	A synthesized peptide derived from human RASSF2
Other Names	CENP 34; RASFADIN; RASSF2;
Accession No.	Uniprot:P50749
Uniprot	P50749
Formulation	Rabbit IgG in phosphate buffered saline , pH 7.4, 150mM NaCl, 0.02% sodium azide and 50% glycerol.
Storage	Store at +4°C short term. Store at -20°C long term. Avoid freeze / thaw cycle.

Application Details

WB 1:500~1:2000

Images



Western blot analysis of RASSF2 expression in Jurkat cell lysate.

Product Description

Potential tumor suppressor. Acts as a KRAS-specific effector protein. May promote apoptosis and cell cycle arrest.

Background

Potential tumor suppressor. Acts as a KRAS-specific effector protein. May promote apoptosis and cell cycle arrest.

Note: This product is for in vitro research use only