

RGS6 Rabbit mAb

Catalog No: #60134

Package Size: #60134-1 50ul #60134-2 100ul

Orders: order@signalwayantibody.comSupport: tech@signalwayantibody.com

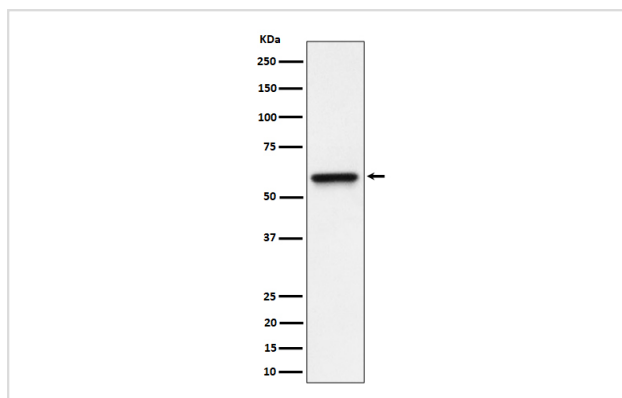
Description

Product Name	RGS6 Rabbit mAb
Host Species	Rabbit
Clonality	Monoclonal
Isotype	Rabbit IgG
Purification	Affinity-chromatography
Applications	WB
Species Reactivity	Human
Specificity	RGS6 Antibody detects endogenous levels of total RGS6
Immunogen Description	A synthesized peptide derived from human RGS6
Other Names	GAP; RGS6; S914;
Accession No.	Uniprot:P49758
Uniprot	P49758
Formulation	Rabbit IgG in phosphate buffered saline , pH 7.4, 150mM NaCl, 0.02% sodium azide and 50% glycerol.
Storage	Store at +4°C short term. Store at -20°C long term. Avoid freeze / thaw cycle.

Application Details

WB 1:500~1:2000

Images



Western blot analysis of RGS6 expression in HeLa cell lysate.

Product Description

Inhibits signal transduction by increasing the GTPase activity of G protein alpha subunits thereby driving them into their inactive GDP-bound form. Activity on G(o)-alpha is specifically enhanced by the RGS6/Gbeta5 dimer.

Background

Inhibits signal transduction by increasing the GTPase activity of G protein alpha subunits thereby driving them into their inactive GDP-bound form. Activity on G(o)-alpha is specifically enhanced by the RGS6/Gbeta5 dimer.

Note: This product is for in vitro research use only